

The Heritage Gazette

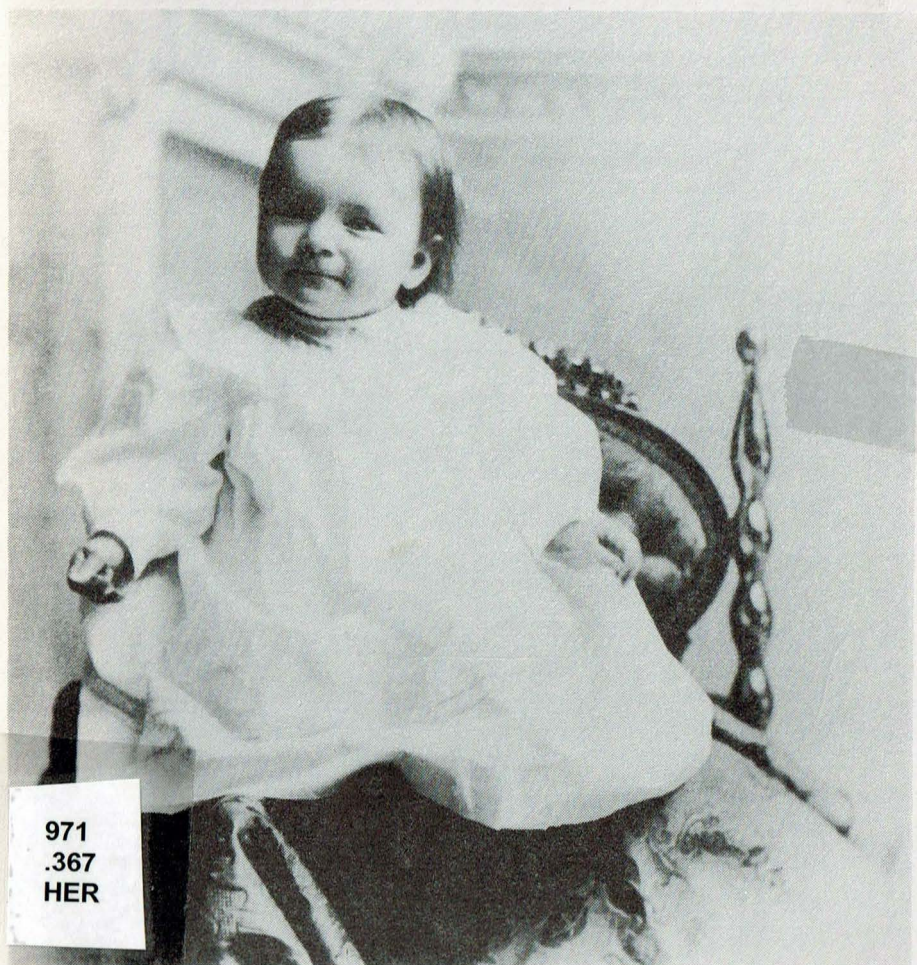
of the Trent Valley

ISSN 1206-4394

Volume I

No. 3

December 1997



971
.367
HER

Volume 1 Issue 3

The Heritage Gazette of the Trent Valley

Kawartha Ancestral Research Association

President:	Art Dainton (also TVA Director)
Vice President:	Stephen Gavard (also TVA Director)
Sylvia Best	Secretary (Director Electronic Communications)
Treasurer	Glenna Robinson (Director: Scheduling)
Director (Library)	Jean Lake U.E.
Director (Correspondence)	Joan Anderson
Director (Memberships/Policies)	Vacant
Director (Computer Resources)	Rick Stimers
Director (E-mail queries, web site)	Sylvia Best
Heritage Gazette Editor:	Stephen Gavard

The Heritage Gazette of the Trent Valley

Published in Peterborough four times a year and produced through
KARA and Trent Valley Archives.

Box 162, Peterborough, Ontario, Canada

K9J 6Y8

Phone (705) 743-7668

FAX (705) 745-8304

e-mail: KARA@pipcom.com

For advertising rates contact Art Dainton (705) 745-8304
or Stephen Gavard (705) 741-3888

Unsolicited contributions and photographs welcome

The information and opinions expressed are those of the contributors and not
necessarily that of KARA, TVA or the directors.

Printed in Peterborough at Pronto-Print Inc. on acid free paper

Cover Photo: Blanche Gavard, born 1895, died 1908. Great Aunt to
Editor, Stephen Gavard

Table of Contents

Editor's note.....	1
Publisher's note.....	2
The Inaugural Carnival.....	4
<i>Research By Elwood Jones</i>	
Captain DeCou U.E.....	9
<i>By Robert C. McBride U.E.</i>	
Irish Memorial.....	14
Peterborough Historical Society.....	18
Trent Valley Archives & APOLROD.....	20
Kawartha Ancestral Research Association.....	23
Smith Township Historical Society.....	26
Millbrook & Cavan Historical Society.....	27
Quaker Oats Fire, photo essay.....	29
<i>By Stephen Gavard</i>	
Peterborough Centennial Museum and Archives.....	35
Campbellford Seymour Heritage Society.....	36
The Peter Robinson Ships Lists.....	38
<i>By Art Dainton</i>	
Queries.....	57

Our Heritage at risk

One of the many functions of the Heritage Gazette is to report on the state of historical preservation in this region. As of this printing, history is in the making that will cause future historians and researchers no end of confusion and concern. That is the Amalgamation process of combining several smaller municipalities into larger ones. How will this affect history? Whenever there is a transition--things get lost or worse, destroyed. A good example of what could happen a few years hence could be as follows: once the dust has settled and the various municipalities become well integrated a clerk or other municipal worker will decide it no longer needs the old records of a now defunct municipality and decides to dispose of them. These records can include tax rolls, election rolls, land records, minutes of municipal councils and other committees or legal records, just to name a few.

The most common reason for records being lost is due to a transition such as a move to a new location or transition and subsequent neglect of seemingly useless piles of files, boxes and paper. In most cases these records have no use in the day to day operations of municipalities and only come into play when there is a discrepancy or dispute that needs to be verified or resolved. The older the records the less likely this need will occur.

With amalgamation, Peterborough County for example, will have half the municipalities it once had. As has been proved with amalgamation in other regions the 'new municipality' will need newer or bigger offices. This is when keeping old records will come into question. It is at this point when heritage groups such as Trent Valley Archives, Kawartha Ancestral Research Association, Peterborough Historical Society, and a host of other heritage groups will play a key role.

A good example of this process can be seen at the Provincial level with the Provincial Government Land Registry threatening to destroy records it no longer needs. Were it not for the efforts of APOLROD (Association for the Preservation of Ontario Land Registry Office Documents) these records would now likely be destroyed and a significant part of our heritage lost.

One of the functions of *The Heritage Gazette of the Trent Valley* will be to report on the state of municipal records in the coming years and possibly act as a rallying point for their salvation should it be necessary. So if you know or hear about any records in jeopardy in the Trent Valley region, whether it is in Victoria County, Haliburton, or any neighboring county then contact us at the Trent Valley Archives, the *Heritage Gazette* or your local heritage group.

Stephen Gavard, Editor

A Successful First Year

Many thanks for your comments on the previous editions of the *Heritage Gazette of the Trent Valley*. With our contributors, advertisers, and readers ongoing support I am confident the Gazette will continue to grow, and thrive.

Through circumstances beyond our control, the mailing and distribution of this edition has been delayed.

This edition has a large Irish content. This is in keeping with the recent 150th anniversary of the Irish emigration of 1847. Peterborough was to a significant extent originally settled as a result of the 1825 Peter Robinson Irish emigration, and the 1847 emigration.

A commemorative event such as this has far reaching research implications for all aspects of our heritage community. With the Irish commemorative research as a catalyst, the Trent Valley Archives Special Collections Team, with the gracious cooperation of His Excellency Bishop James Doyle have microfilmed and catalogued the Peterborough Diocese Roman Catholic archives. This valuable historical, and genealogical collection is now accessible through the Trent Valley Archives, Ancestral Research Centre. These records embrace a remarkable cross section of Upper Canada circa 1840 to 1920. Additionally, through St. John's Anglican Church Archivist Elwood Jones, we have obtained in microform, the records from that archives. In keeping with this common theme, and the credibility that has been established through the acquisitions to date, other valuable repositories have also expressed interest in having their materials preserved on microfilm, and available for research.

Great cooperation within the community, and the financial facilitation by Trent Valley Archives through member support, and your donations, make the *Heritage Gazette* and ongoing archival acquisitions possible.

Best Wishes for the New Year!

Art Dainton

Publisher

Vice President Trent Valley Archives

(705) 745-8304 (voice & fax)

adainton@pipcom.com



Examiner, 23 January 1886

Masks, Music, Mirth The Inaugural Carnival an Immense Success

**- Score a Big One for the Band Boys - Splendid
Costumes - A Jam of Spectators - A Brilliant
Scene on Ice**

- List of Maskers and Prize-Winners

The event which has been exciting skating circles for some time past, the first of the Fire Brigade Band Carnivals, passed off very successfully last night. All afternoon the band serenaded the town, and did their utmost to draw the attention of the public to the fact that it was the night of the carnival.

The Batcoche Minstrels a number of local admirers of colored minstrelsy, also did their best in advertising the Carnival. From the time the rink opened until near nine o'clock, a continual stream of masqueraders and spectators poured into the building. The rink was gaily decorated with many

hued flags, festoonings of streamers and evergreens, which with the help of the electric light, and the many gaudy costumed skaters, gave it the appearance of an enchanted amphitheatre. The glistening ice was soon covered with over a hundred figures, who flitted about over the glassy surface like phantoms, mingling with each other, and every changing like the gay colors in a kaleidoscope. The band discoursed excellent music from the stand in the gallery, while the Batoche Minstrels, had a circle of admirers around their stage at the north end of the rink, where they sang southern melodies and reproduced jokes to their hearts' content. The galleries and almost all available room was occupied by spectators. The local curlers

amused themselves by practicing the in turn, etc.

The characters represented were numerous, attractive and well taken. The Red Man from the west saluted his copper colored brother from China, while the Zulu made love to a snow shoer, and his Satanic Majesty seemed acquainted with all. Swarthy Africans, of the dude persuasion, were in the majority. The costumes as an average were exceedingly fine, being artistic as well as fancy. Individual mention is unnecessary.[sic] The following is the list of masqueraders, and the characters represented, as shown by their cards:

LADIES

Miss Emma Derry
Hope
Miss Mackerrras
A Gypsy
Miss Mamie Dennistoun
Tyrolean Peasant
Miss Lottie Green
Fish Girl
Miss Allie Crossland
Pink of Parfection
Miss Lena White
Advertisement card
Miss Nellie Ho[o]per
Gleaner
Miss A. Alexander
Miss Canada
Miss May Heuback
Good Luck

Miss May E. Paterson
Grace Darling
Miss Jennie Rose
Last Rose of Summer
Miss Annie Bolton
Italian Lady
Miss Minnie Logan
Autumn
Miss Ada Miller
Snowflake
Miss Minnie Hay
Snow White Lamb
Miss Bertha Dean, Bridgenorth
Snow White Lamb
Miss E. Shortly
Snowshoer
Miss Bessie Hopwood
Eastern Queen
Miss Ella Bennett
Snowshoer
Miss Calcutt
Amateur Athletic Association
Miss M. Calcutt
Queen of the rink
Miss Kate Dunsford, Lindsay
Highland lassie
Miss Flo Dunsford, Lindsay
Highland lassie
Miss Lillie Dixon
New Haven fishwife
Miss A. Calcutt, Chicago
Peterborough Curling Club
Miss Annie Wesley
Out of season
Miss A. Strickland
French cantaniere
Miss Rose Dunsford, Lindsay
A Bohemian Gypsy

Miss Jennie Wesley
 Gold Fish
 Miss Meta Bridgman, Lindsay
 Italian water bearer
 Miss Mabel Chambers
 Lucline, the water nymph
 Miss Maud Perry
 The old woman who swept the
 cobwebs off the sky
 Miss Maggie Farrel, Toronto
 Queen of Hearts

GENTLEMEN

W.J. Craig
 Yankee Doodle
 John H. McDonell
 Montreal Snowshoe Club
 Thomas Hooper
 Pastry cook
 B. Millar
 Japanese servant
 W. Lyle Warsaw fireman
 D.J. Alford
 Warsaw fireman
 Frank Irwin
 Lakefield dude
 H. Evans
 Fireman
 Jas. R. Baker
 Outlaw captain
 Herb Robertson
 Crete Lacrosse Club
 Ernest Roper
 Youthful Hindoo
 Herbert Dawson
 Christopher Columbus
 Walter Derry
 Peterborough trade

H.J. Everett
 King Ahasuerus
 H. Bacon
 Zulu
 F. Metheral
 Ancient Jewish Warrior
 Leslie Barrie
 Wandering dude
 Fred White
 Sailor boy
 Harry T. Myers
 Spanish courtier
 Willie E. Wright
 Western hunter
 Bert Hodgson
 Housemaid
 Freddie Logan
 Shela Burke
 Willie Menzies
 Highland Laddie
 Willie Barrie
 Grandmother Swan[s]ton
 W.M.
 A dude
 W.M. Savigny
 57th Bn Band
 W.E. Laing
 57th Bn Band
 Murray Millar
 Red, white and blue
 Jas. King
 Sambo
 L. Mayou
 Dina
 Percy Roper
 Prof Grant
 Robert Russell
 Englishtown Masher

Frank Jones
 Tramp
 Georgie Wilson
 Arab
 Harry Robinson
 Irish politician
 W. Heather
 Gen Havelock
 G.A.W. Hamilton
 Private, 57th Bn
 C.W.E.T.A. Orde
 Sergeant, 57th Bn
 L. Lemay
 Starlight
 Wm. Clinkscale
 Football player
 D.M. Wilson
 Courtier 11th century
 S. Craven
 Richard III
 W.J. Read, Bobcaygeon
 Spanish nobleman
 T. Baker
 A swell
 Arthur Robinson
 Snowshoe
 Will Grierson
 His Satanic Majesty
 W.M.C. Boyd, Bobcaygeon
 Matador
 Chas McIntyre
 Fireman
 T.J. Baird
 Charles II
 C.E. Stewart, Bobcaygeon
 Duke of Buckingham
 W.D.E. Strickland, Lakefield
 Italian peasant

Willie Batten
 Deadwood Dick
 Jas. A. Gillespie
 China Boy
 Percy Rubidge
 Capt. Jinks
 Willie Thorndyke
 Crazy Patchwork
 R. Lund
 Highlander
 W. Heathcote
 Gen Havelock
 Frank McNaughton
 Mrs Murphy
 W. Batten
 Cowboy
 Master Orville Shortly
 Snowshoe
 Willie Chapman
 Housemaid
 J. Shevlin and R. Tierney
 Song and Dance

PRIZE WINNERS

The following were awarded prizes:

Best costume, lady -- Miss Bridgman, Lindsay, "Italian water bearer" A pair of finely finished and elegant gold bracelets.

Best costume, gentleman -- D.M. Wilson, "Court Gentleman" Beautiful Encrusted Gold Ring
 Best costume, girl - Miss Mabel Chambers, "The Water Nymph" a pair of gold pearl ear drops

Best costume, boy - Walter Derry, "Peterborough Trade" elegant gold lined silver cup

Best comic costume - William Logan, "Clown" a very handsome pair of vases

Best dressed fireman - Robert Sherlock handsome pipe

Hurdle race - H. Kirby silver cup
Boys' race - Dickson Davidson. silk handkerchief

JUDGES

The judges were: Ladies - Mrs Dr Burnham and Mrs R.B. Lundy. Gentlemen - Dr Boucher, Dr Geo. Burnham and J.E. Hammond.

There was a large number of masqueraders from Lindsay, Bobcaygeon, Bridgenorth and other places. At about 9 o'clock maskers unveiled, but continued to exhibit on the ice. The races were not all carried out, as for some time there were no entries. It was successful in every particular, and encouraged the band to proceed with the others. The next carnival of the se-

ries will come off on February 19th.

Daily Examiner, 6 June 1885

The Dance is Done

Mr Ed Brown has concluded to politely but decidedly decline to permit the dancing of any more waltzes at the Lansdowne Roller Skating Rink.

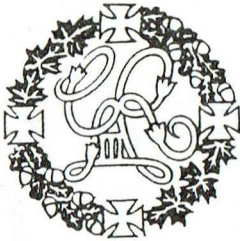
Big and Little Wheels

On next Thursday evening Mr Ed Brown, the popular manager of the Lansdowne roller rink, is to have J. Hurst, the champion Bicyclist of Canada, give an exhibition in the art of the bike on the large and spacious floor; besides this he intends presenting a beautiful medal to the winner of a mile race in which eight starters must toe the scratch. The rink is increasing in popularity day after day and makes the stranger entering our town think that he has struck the Musical Pavilion of "Coney Isle."

*Peterborough's Most Affordable Internet Connection:
with Computer sales, service, & consultation*



250 Sherbrooke St. Unit #3 // Peterborough, Ont. K9J 2N4 // Ph: 748-5338 FAX 748-5119



The following article is the story of a United Empire Loyalist and ancestor of the author, Robert McBride. It is the second excerpt detailing life in Upper Canada.

Captain John B. DeCou: Pioneer and Entrepreneur

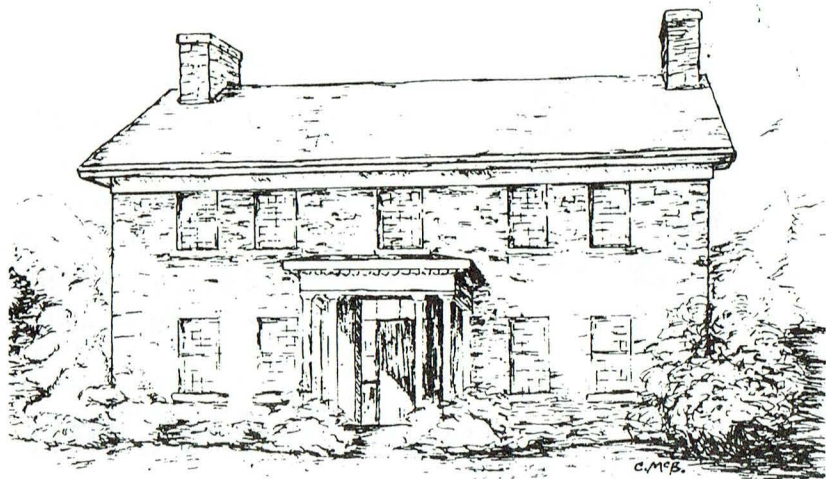
by Robert Collins McBride, B.S.c., M.Ed., M.M., U.E.

On 28 August 1800, John B. DeCou and Robert Ker, a well-known doctor at Niagara, petitioned for a strip of land on the banks of the Niagara River for a mill site "above Canby's and McGill's". Forty-six local inhabitants backed up this petition, pointing out that the existing mills on the Niagara were not sufficient for the needs of the country and also pointing out that the proposed new mill site could be reached by boat, which was an advantage in those days of poor roads. The enterprise was strongly opposed by government officials because of the strong opposition of the wealthy and influential millers already established on the Niagara River. As a result, the petition was

disapproved. By 1801, John B. DeCou also operated a grist-mill at DeCew Falls.

On 9 August 1798, John B. DeCou married Katherine Dochstader (9 January 1781, Fort Niagara - 5 December 1856, Decewsville, Cayuga Township, Haldimand County), daughter of Lieutenant Frederick Dochstader (1761, Stone Arabia, New York - 19 October 1781) who had been killed in action while on active duty in the American Revolution as a Lieutenant in Butler's Rangers under command of Major Ross near Otsego Lake in central New York.

"Upon locating at DeCew Falls, John B. DeCou erected a log dwelling, facing his mill and



DeCew House

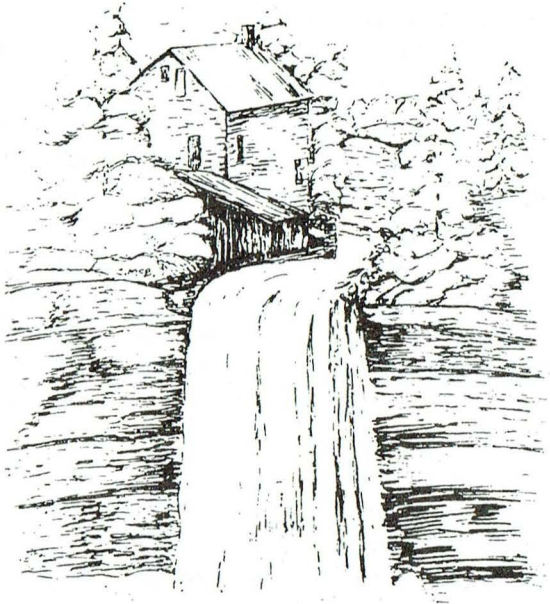
the stream. Prosperity and the married state turned his thoughts to the erection of a more fitting domicile and he determined to make his new house the finest in all the region. By this time a road had been opened through his property leading westward to the head of Lake Ontario. This became the principal east-west highway of the Peninsula. John chose a site for his stone home on the crest of a knoll facing southward. Three foot thick walls of limestone, bound with clay and straw, rose to a full two stories. Great stone chimneys were built into the walls in each gable end, providing cavernous fireplaces in the principal rooms. The dignified entrance gave access to a spacious hall from which rooms opened on

either hand and stairs led to the floor above. The interior finish was of heavy black walnut, and all the furnishings were of the best in design and workmanship. The stone-flagged basement contained the fireplaces for cooking and the bake oven, as well as the cheese-press and other domestic machinery. A small portico sheltered the front door looking out on a terrace with stone steps. This Georgian-style two and a half storey stone house was the wonder of the countryside and the admiration of travellers. The dwellers in log huts came from miles around to view it, while other men of means were inspired to erect for themselves dwellings of a size and style that had not previously been contemplated."

There is some question as to the exact date of construction of Capt. John B. DeCou's Georgian-style stone house at DeCew Falls, it being either 1803, 1808 or 1812. Another description of the home (unidentified source) records: *DeCew House was built in 1808. The materials were field limestone for the body of the house, heavier stones for the corners, and a home-made cement or clay, lime and hair. ... An eight-foot cellar was dug under the whole of the fifty-three by thirty-four foot structure which boasted massive walls, two and a half feet in the basement, eighteen inches in the attic. The east and west walls supported ponderous chimneys each with two flues, which towered six feet above the ridge pole of the roof. ... Nine foot ceilings downstairs and eight foot ones above were typical of the colonial style of architecture. The front door opened into a wide hall running straight through to the back door and panelled with walnut to about four feet and finished above with panelling with plaster, into which at a height of about seven feet were set four inch wide walnut boards into which hooks could be set for coat hangers. Panelling framed both the front door and the two side windows, giving the effect of an almost solid walnut*

wall. The two deep window sills were of the same wood. A solid walnut stairway rose straight to the upper hall. ... The main feature of the west room on the ground floor was the wide colonial fireplace with its high mantel. This was set in only one-half of the chimney breast, the other half containing the flue connected to the fireplace in the room above. All the trim in this room was of pine worked into an elaborate reeding design displayed in cornice, around the fireplace and as panelling along the sides of the four windows. Plastering was done right on the stone without intervening lathing. The high baseboard and the chair rail were of the clearest pine. Across the central hall from this large room were two smaller ones, each with a fireplace. The larger front room had a very gracefully designed walnut mantel with walnut paneling around the fireplace and was lighted by three windows, two south and one east. The rear room had a very simple fireplace with plain pine board panelling. It was lighted by two northern windows. All downstairs doors were of walnut, panelled in the cross design and all floors throughout the house were of thick, wide pine boards. The basement was fitted up with a very wide fireplace,

complete with iron crane for swinging heavy iron pots over the fire and hobs for keeping things warm. A brick bake oven built bee-hive style completed the kitchen equipment. The nails used in the house were hand-made, and wooden pegs were used in door and window frames. All the heavy timbers were squared by the axe from whole logs and some whitewood used in the joists. Most of the rail fences of the farm were also of walnut. A third description, written in 1919, states, in part: ...



**Captain John DeCew Mill
DeCew Falls**

To the right [of the main hallway] is the front room of the house, entered through a wide doorway... Opposite the door yawns the great fireplace. Built of native limestone and seemingly as strong as a monolith, the chimney juts out into the room and rises through the floor above, forming the main pillar of the East wall. The hearth is of red tiles, deeply grooved and worn, and above the fire a course of handmade brick shows palely red. Here the four foot lengths of beech or maple may blaze today as they did long, long ago ... The old floor, the old

walls, the old wainscot and paneling are there, and the windows, deep in the great stone walls and high from the floor, look out upon the old garden and orchard. (Ernest Green, *History of DeCew House*, *The Telegram*, 1919, reprinted in the *Thorold News*, September 16, 1982, pp. 7 - 8, 15 - 16). John also imported a variety of fruit trees which were planted around the home. He imported seeds and young plants from the United States and from across the Atlantic, and planted his grounds with fruit trees and flowering

shrubs such as the settlers had never seen before. There were fruits of new and delicious sorts, an orchard of choice apples, and a line of cherry trees along the road all the way from the house to the falls, three-quarters of a mile away. (Green, 1919). In 1804 John was elected a director of the Niagara District Agricultural Society, the pioneer organization of its kind in Upper Canada. In order to use the teasel for his wool mill operation, he introduced this plant to the Peninsula bringing it home with him during his escape in the War of 1812, much to the chagrin of his neighbours as it now abounds as a noxious weed through-out the region.

The earliest municipal records of Thorold Township are 1799 in which John was collector of taxes. In 1810, 1816, 1818, 1819 and 1835 he was assessor and in 1815, 1820 and 1822 he was Warden of the township (*Jubilee History of Thorold*). In June 1800 he was one of the forty-one original proprietors of the earliest schools established in the vicinity, each member paying twenty-four shillings into the fund. (*Niagara Library, 1800 - 1820*, p. 7)

In the next issue John B. DeCou is commissioned a Lieutenant on the eve of the War of 1812.



"Into The Silent Land"

A book on cemeteries and graveyards in Ontario

Special attention will be given in this book to the garden cemetery with its curved roads and paths, specimen trees, statuary, flower beds and urns. My book will include such features from the 19th and early twentieth centuries as touching and unusual headstones, iron enclosures, designs for the site, landscaping features, urns, chapels, vaults, mausolea, gate-lodges, gates, and crematoria. I would be most grateful to hear about your favourite cemeteries or graveyards in Ontario. Early views and information about their histories and site-plans are particularly helpful.

Please contact:

Jennifer McKendry
1 Baiden Street,
Kingston, ON
K7M 2J7
(613) 544-9535

Dr. Jennifer McKendry is an architectural historian and photographer. Her books include "Weep Not for Me: a Photographic History and Essay of Cataraqui Cemetery" and "With Our Past Before Us: 19th-Century Architecture in the Kingston Area".

Irish Famine Monument

1847 - 1997

On November 9, 1997 an unveiling ceremony took place to celebrate the establishment of a monument in honour of the Irish immigration during the famine of 1847.

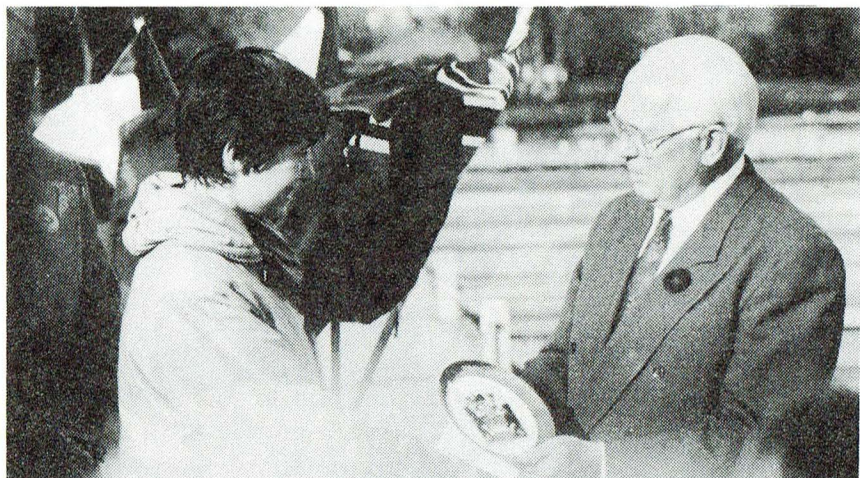
1847 was the year of the largest migration of Irish emigrants to British North America. In Ireland starvation as a result of the potato famine was at its peak. According to the records of medical Superintendent Dr. G.M. Douglas (father of C.M. Douglas, V.C. of Lakefield) an estimated 74,000 emigrants passed through the quarantine station under his



direction at Grosse Isle Quebec. A higher than normal percentage of deaths occurred amongst the newcomers this particular year, caused by typhus (ships fever) and cholera. As the emigrants moved inland many carried the deadly cholera with them. Along the route "hospital sheds" were set up to accommodate the sick in Montreal, Kingston, Cobourg and Peterborough. In Peterborough the quarantine and treatment facility was



His Excellency James Doyle - Bishop, Peterborough Roman Catholic Diocese with Co-Chairman Keith Dinsdale looking on.



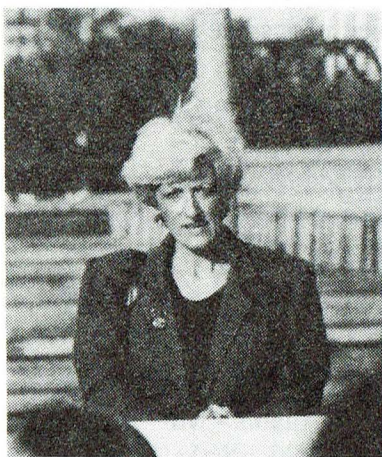
Mayor Jack Doris presenting Maeve Collins of the Irish Embassy a Commemorative plate.

located on a small peninsula near Point Saint Charles. This is now commonly known as Del Crary Park. A subscription of 364 pounds was raised in the Peterborough region to assist famine victims still in Ireland and Scotland.

Also it was resolved to apply a portion of the funds for relief of the emigrants arriving here. It is estimated that 33 deaths occurred here at this site. Doctor John Hutchison, and Thomas A. Stewart, prominent figures in this community assisted the emigrants. Both fell victim to the "ships fever" and died. In the years following the area population grew rapidly. Peterborough entered a period of major economic growth inspired in part by the perseverance of these pioneers to develop

this community. We pay homage for what they have done.

Benefactors to date
George Coene - Fowlers
Corners Excavating
The late John Lynch



Brenda McGuinness, President of Peterborough Canadian Irish Club



Peterborough Monument Works preparing memorial for commemorative plaque.

Ontario Ministry of Culture & Recreation

Trent Valley Archives - Ancestral Research Centre
Peterborough Monument Works

Committee Members
Keith Dinsdale & Pat Power
Co-Chairmen

Ken Armstrong
Ron Doughty
Brenda McGuinness
Barbara McMahan-Dainton
Shirley O'Grady

Officials present at the unveiling ceremony,
Keith Dinsdale and Pat Power
Peter Adams - MP
Gary Stewart - MPP
Tom Flynn - Warden

Peterborough County
His Worship, Mayor Jack Doris
- City of Peterborough
Maeve Collins - Irish Embassy, Ottawa

Brenda McGuinness - President
Peterborough Canadian Irish Club

His Excellency James Doyle - Bishop, Peterborough Roman Catholic Diocese

Reverend Michael Wright - Chair Peterborough Ministerial Association

Further donations to assist with the purchase of a bronze plaque, and ongoing maintenance can be made to:
Peterborough Canadian Irish Club
Box 1325 Peterborough Ont.
K9J 7H5

Friends of the Chemong Portage

For thousands of years, the Chemong Portage was used as a six mile overland link in the Trent-Severn Water System, between the Otonabee River and Chemong Lake. The Chemong Portage was located in the area of the present Chemong Road between Peterborough and Bridgenorth, Ontario.

The Friends of the Chemong Portage is a non-profit charitable community association established in 1992. The Friends promote the natural and cultural heritage of the Chemong Portage through activities and projects.

The Friends host annual events in the Portage area, including:

Traditional Christmas Cookie Exchange and Party

Snofest Dinner on the Chemong Portage

Pedal the Portage and Heritage Walk

Take a Hike in the Downey Woods

Membership is \$2.00 a year for more information contact:

Friends of the Chemong Portage

12-243 Milroy Drive

Peterborough, Ontario

K9H 7L8

(705) 741-3077

e-mail: ccopps@trentu.ca



Ontario Genealogical Society

Seminar '98 May 29, 30, 31 University of Western Ontario

For more information

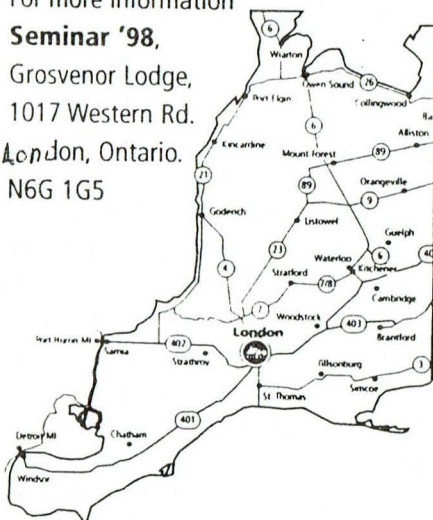
Seminar '98,

Grosvenor Lodge,

1017 Western Rd.

London, Ontario.

N6G 1G5



voice (519) 645-2845

fax (519) 645-0981

e-mail dmulliga@icis.on.ca



THE PETERBOROUGH HISTORICAL SOCIETY

It is a yearly PHS tradition to celebrate at the beginning and end of the Yuletide season -- with our House Tour and Hogmanay. These are great opportunities to gather with PHS friends and others.

Hogmanay, the traditional Scottish Yew Year, will be held on January 1, 1998 (1-4 p.m.) at Hutchison House. It begins with the piping in of a "first footer" bearing his tray of bread, salt, fuel, and drink. In the house there is Scottish dancing and music, traditional food, and Atholl Brose. For many, the event's highlight is Robbie Burns' Address to the Haggis, with a real haggis. With this going on, we hope to see you at the House on January 1.

Before the Pros

Ed Arnold and George Elliott have produced another book on growing up in Peterborough, and this, too, is a most enjoyable book, heavier on nostalgia than on analysis. In essence, this is six stories accompanied by six picture essays, each about a player who became a Pete and then a professional hockey star. "Red" Sullivan, Joey Johnston, Doug Gibson, Paul Evans, Steve Larmer and Bob Gainey grew up in separate times and so Ed and George have many opportunities to remind us of what it was like in the world at large from the 1930's to the 1950's. Half of that world was in East City; and half was Roman Catholic.

The photographs and George Elliott's sketches add a valuable dimension to the book. He has drawn pictures of the homes of the stars, but chiefly as they look today.

Appropriately, part of the proceeds of the book go to the Peterborough Sports Hall of Fame. Ed and George are to be congratulated for finding such entertaining ways to relive their youth and then to share it.

The \$20 paperback sells in local bookstores and at the Sports Hall of Fame.

January Meeting: Tuesday January 20, 730 Peterborough Public Library Auditorium, guest speaker Julia Harrison, Archaeology Prof. Glenbow Museum, First Nation Exhibit, "The spirit sings"

February Annual General Meeting

St. Paul's Presbyterian Church, Hall

February 17, 6 p.m. Dinner \$12 tickets available at Hutchison House after the January meeting.

The Peterborough Historical Society is based at Hutchison House
270 Brock Street

Peterborough, Ontario

Canada K9H 2P9

(705) 743-9710

Memberships are \$15 single or \$20 family .

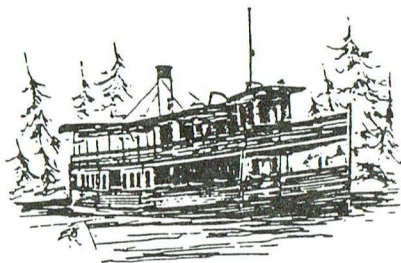
HERITAGE FESTIVAL PLANNED

Peterborough City Council was informed recently by organizer John Wadland that over 40 people representing 27 organizations attended a three day conference to plan for next summer's first Canadian Heritage Festival here in Peterborough.

Mr. Wadland is a Canadian Studies Professor at Trent University who informed City council that in addition to a grant of \$5,000 from the city a federal grant from Human Resources Development Canada was recently acquired. This also includes \$2,000 from Trent's Canadian Studies program and \$4,000 from registrations.

The festival is scheduled for July 1 and to last two weeks. The theme is to be "Celebrating Canada in the Kawarthas". The festival will celebrate Canadian theatre, film, dance, heritage events, seminars, lectures, a book fair and concerts. In addition Trent University will hold its annual two-week summer institute to coincide with the festival.

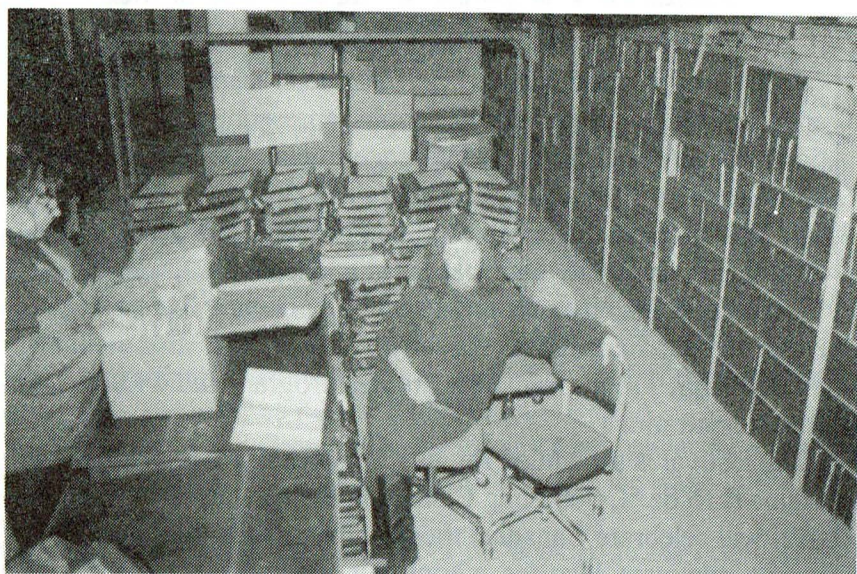
VOLUNTEERS INVENTORY PETERBOROUGH COUNTY LAND REGISTRY RECORDS



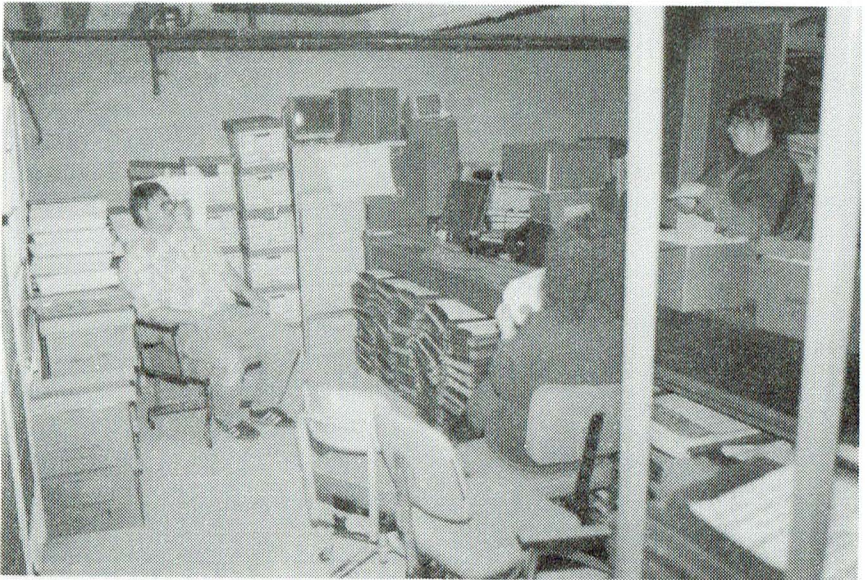
By Sylvia Best

It is now generally known that the provincial government decided some time ago, to dispose

of the original documents dating 1869-1995, from the County Land Registry Offices across Ontario. Having been microfilmed, the documents



Barbara McMahon-Dainton, Vice-Chairman of Kawartha Branch OGS, and Director Of KARA along with Sylvia Best representing KARA and APOLROD look over Land records currently housed in the basement of Lindsay Town Hall.



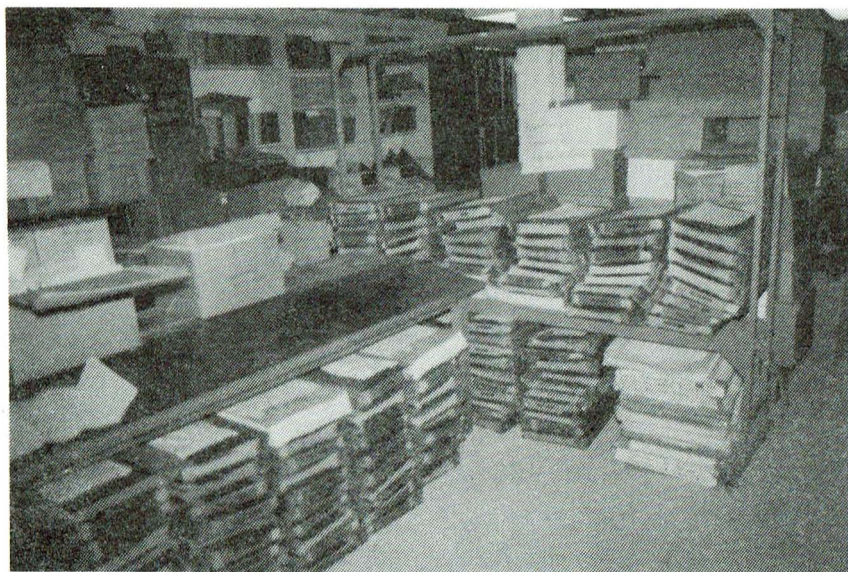
Don Willcock, representing Trent Valley Archives and Peterborough Historical Society along with Sylvia Best and Barbara McMahon-Dainton uncovered a substantial number of historical documents not related to land records, an unexpected find.

were held in storage gradually requiring significant space to accommodate the ever growing number of boxes. With the move toward fully automated record searches, the Land Registry Offices expected no further need of the original copies.

Thus the government decision to shred these old documents was put in place and not stopped until a public outcry was raised over the loss of prime heritage material. The result of public concern expressed was the formation of APOLROD (Association for the

Preservation of Ontario Land Registry Office Documents). The goals of APOLROD are to raise community awareness about the Land Registry documents, organize volunteer teams to complete summary inventories and facilitate the eventual transfer of the 1869-1955 period documents from Land Registry offices to archival heritage groups within local communities.

The volunteers for Peterborough County are working through this process laid out by APOLROD. Similar groups are



Efforts are now underway to find a suitable local home for these records.

working with the Victoria, Northumberland and Haliburton County records. In October a community meeting was held during which a history of the land registry documents and their proposed fate was reviewed. A volunteer team was formed and has moved steadily forward since that time. Work is now underway on the inventory of registers and instruments

relevant to the Peterborough County area. It is expected that the inventory will be completed by the end of 1997. More important, it is hoped that these original documents will have been relocated to a heritage archive site within town, before another year passes.

Memory Lane

Enterprises

Heritage Tours & Publishing

2036 Moncrief Rd.
Peterborough, Ontario
K9K 1N8

(705) 741-3888

stephen.gavard@bbsthekc.org



The Kawartha Ancestral Research Association

New at the ARC

Peterborough Catholic Diocese Archives

Recently, the extensive collections of the Peterborough Roman Catholic Diocese Archives were microfilmed. The film is in the process of being indexed and catalogued. Access to the Peterborough Diocese Archives is now closed to the public but is now available the Ancestral Research Centre and will be part of the Trent Valley Archives Special Collections Group.

The collection includes pre-1920 records of Baptisms, Marriage and Deaths for most of the Parishes in Peterborough, Victoria, Northumberland and Simcoe Counties. Post 1920 Baptisms, Marriages and

Deaths and some cemetery records for the above Parishes and others in the Diocese, are also preserved in this Special Collection. Freedom of Information and Privacy prevent this sensitive information from being available for public research at this time. Upon request, some of this information can be extracted for researchers.

The research Team is pleased to be able to share the information obtained through the microfilm preservation of this collection. Fees charged are necessary to offset otherwise un-subsidized expenses.

For more information contact:

Trent Valley Archives
Special Collections Group
Suite 193,
266 Charlotte Street
Peterborough, Ontario
K9J 2V4
(705) 745-8304

The first annual general meeting for KARA was held on November 30 and Officers for 1998 were approved as well as rules of operations and a report on association finances. The sizable donation to the library by Alan Erskine is now on the shelves and includes genealogical resources from the Bruce & Grey, Elgin, Kent, Middlesex, Niagara, Perth, Lanark, Waterloo Wellington, Renfrew, Carleton-Brant & Oxford counties and consists of B.M.D.'s, cemeteries, funeral home, newspapers, municipal records, family history sources, liquor licenses, Upper Canada Marriage records just to name a few. This is in addition to a significant increase in other books donated throughout the year. The library in the past two years has tripled with no end in sight. A donation provided by Gail Nelson gives the Research Centre an updated version of the LDS IGI microfiche, enhancing the microform collection.

Trent Valley Archives has opened a reading room at the Ancestral Research Centre and houses a large collection of historical material to supplement genealogical research. It is also envisioned that public access to the Trent Valley Archives will be established through this reading room. Requests will be made through the Archivist, Marianne

MacKenzie and the material will be brought to the reading room for use. More details will be provided once it is up and running.

In November the Kawartha Branch of the Ontario Genealogical Society held its monthly meeting at the Research Centre and it was such a success that plans are in the works to make it a regular event on their annual calendar. Unlike previous meetings this one is similar to meetings previously held in the Public Library where members can pour through the library collection and share information in an informal setting. The Kawartha Branch also held a rare 'Christmas Meeting' at the centre where members brought pot luck desserts, took part in a fundraising draw and penny auction.

Expectations for 1998 include sizable donations to the library text collections as well as the possibility of acquiring sizable historical records from several sources which would be housed at the Trent Valley Archives and accessed through the Ancestral Research Centre. Should this come to pass it would make the Ancestral Research Centre and Trent Valley Archives a premier depository for heritage material and research. Fundraising efforts are also expected to develop, including the much anticipated KARA heritage

cookbook. Donations of recipes and family histories are still sought for this vital fund raiser.

In Memorium

A memorial has been established for those who wish to donate money or items to the centre in memory of a lost loved one. The donation would be named in honour of the deceased.

Some donations have already been received toward the purchase of Peterborough County census for 1861, 1871, 1881, 1891, 1901 from the Ontario Archives and will be in the centre in the new year.

The 1851 census for Peterborough was recently purchased and will be in the centre in the new year on microfilm.

The current roster of officers for KARA in 1998 are:

President: Art Dainton
(Chairperson-
Building Management)
Vice President: Stephen Gavard
(Chairperson - Publications,
Editor- Heritage Gazette)
Treasurer: Glenna Robinson
Recording Secretary: Sylvia Best
(Chairperson -
Electronic Communications)
Membership Coordinator: Vacant
Library Chairperson : Jean Lake
Correspondence Chairperson:
Joan Anderson
Communications & Scheduling
Chairperson: Diane Newell
Policy and Procedures
Chairperson: Robert Lafleche
Retail Operations Chairperson:
Barbara McMahon-Dainton
Data Entry Chairperson: Vacant
Computer Resources Chairperson:
Rick Stimers

Kawartha Ancestral Research Association web site

<http://www.pipcom.com/~kara/>
e-mail: kara@pipcom.com

Hours of operation for the Ancestral Research Centre

Wednesday, 1-5 p.m.

Thursday 6-9 p.m. *free*

Friday, 1-5 p.m.

Saturday 1-5 p.m.

Smith Township Historical Society



Coming soon

"Bridgenorth: The Centre of the Universe, a History of Bridgenorth from 1818 to the Present", by Helen Rutherford Willcox. A laminated hardcover, 400 pages with many family trees and photographs published by Smith Township will be available in early 1998. Prepublication \$25, after publication \$38.

Contact Bernice Harris

1348 Hilliard St.

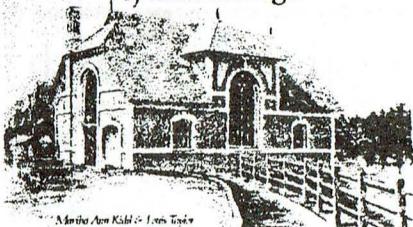
Peterborough, Ontario

K9J 6X5

(705) 742-7390

Add \$6.00 for postage and mailing. Cut off date for prepublication sales, January 15, 1998.

Historical Sketches of Peterborough



Historical Sketches of Peterborough

Trent Valley Archives, through the Ancestral Research Centre has a limited quantity of autographed, out of print, copies of *Historical Sketches of Peterborough* by Martha Ann Kidd and

Louis Taylor. This book contains literary and pictorial sketches of sixty of Peterborough's most interesting and important buildings. It also includes archival photos an introduction, a glossary of architectural terms, a tour map and several early maps of the city. Copies may be purchased at the Ancestral Research Centre, 247 Hunter St. W., Peterborough for \$20.00, or by writing to Trent Valley Archives, P.O. 786 Peterborough ON K9J 7A2. Make cheques payable to the Ancestral Research Centre and include an additional \$5.00 for packaging and shipping.

The Millbrook & Cavan Historical Society

An Exciting Project Launched

Cavan Township, since it was settled as early as 1816, has a rich architectural heritage which is worthy of being recorded for posterity. To this end the Millbrook & Cavan Historical Society plans to compile a register of all buildings in the township that were built before the turn of the century, to include private homes, public buildings and churches.

Sadly, some early buildings are no longer standing, such as the tavern erected by Cavan's first settler John Deyell shortly after he arrived in the township from Ireland

in 1816. It stood near the intersection of the present Highway 28 and the 3rd line of Cavan in Centreville. When it was taken down, approximately a quarter of a century ago, it still had the original taps for dispensing ale.

Compiling such a register will be time consuming, probably taking at least two to three years to complete since the society is also planning to produce a book with photographs of each building as well as information. Therefore the Society will be asking the residents of the township for their help. If you are fortunate enough to be the owner of an historic home please phone one of these numbers: 944-5739 (Eileen Cheatle), 944-5904 (Marsha Plewes), 742-2966 (Anne Ramsden). In case an owner lacks some relevant data, the Society will complete the research. The Historical Society has already accumulated considerable research on houses within Cavan Township.

Laws of Genealogy

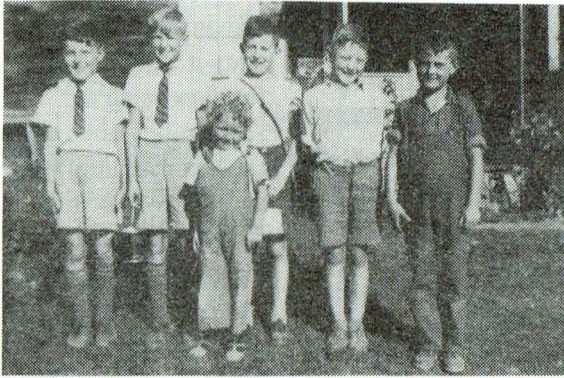
(excerpted from Journal of Victoria Genealogical Society Vol. 20, No. 2)

The ancient photograph of four relatives, one of whom is your progenitor, carries the names of the other three.

You learned that great Aunt Matilda's executor just sold her life's collection of family genealogical materials to a flea market dealer "somewhere in New York City".

The keeper of the vital records you need will just have been insulted by another genealogist.

The following photos and reminiscence are of Mr. Ivan Rowan's life in Cavan Township



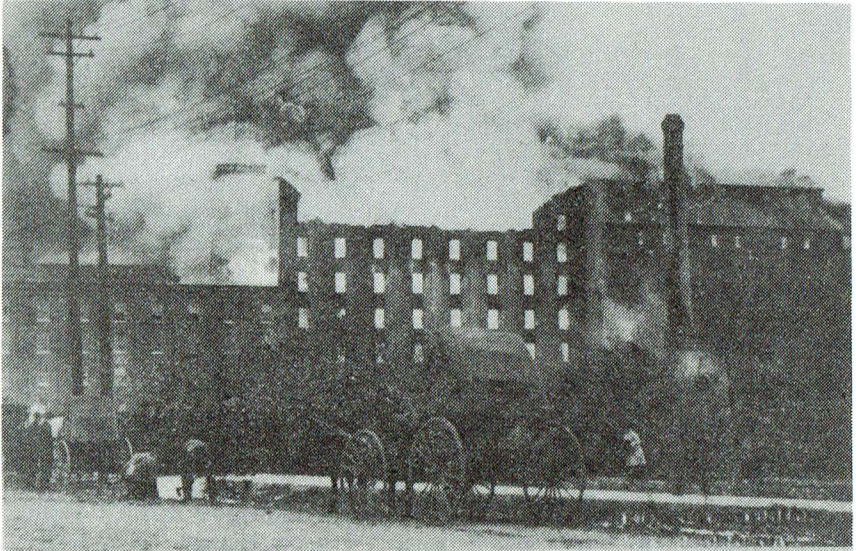
"This picture was take at the present home of Mel and Sherman Morrison on the Quarter Line. It was taken during World War II. Barry and Jack Whitnell lived there during the war with their mother and the Morrissions, as their father was overseas. We often stopped here on our way back to school. LtoR Ivan Rowan, Marvin Rowan, Roy Peacock, Jack Whitnell front Barry Whitnell, Jim Seymour."



"Mervin and myself rode our old workhorse, Nellie to school for a while, either tying it up at Frank Ballantyne's or to the fence behind the school. During the war on a Red Cross project we took the horse and went up and down the roadsides collecting milkweed which we took to school to be sent away by the teacher for the making of synthetic rubber."

The Quaker Oats Fire, December 11, 1916

Photo essay by Stephen Gavard

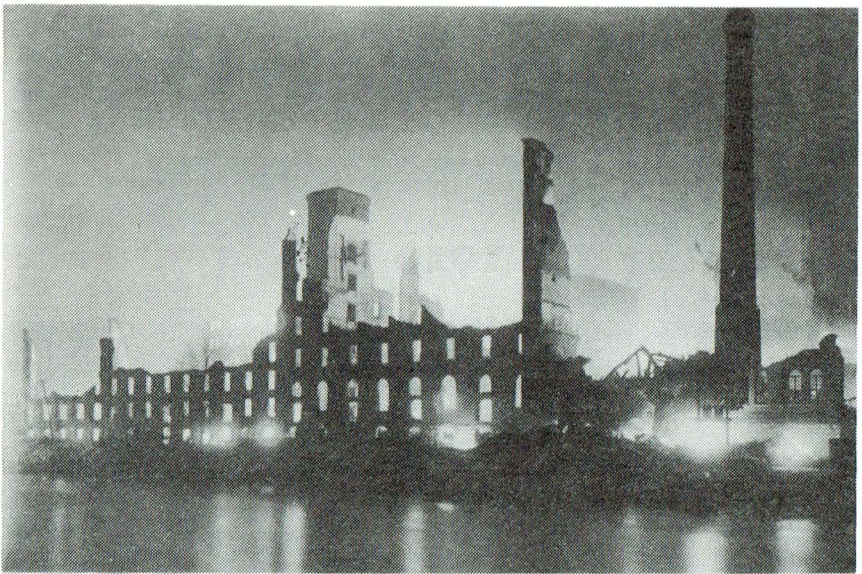


Courtesy PCMA

Quaker Oats after a dust explosion about 10:00 a.m. and resulting fire December 11.

One of the most memorable and tragic events that occurred in Peterborough took place when the war in Europe dominated the news. The Quaker Oats fire destroyed much of the plant on December 11, 1916. The blast was such that entire sections of the plant collapsed. Sixteen people lost their lives and many others were injured.

An article in the Peterborough Examiner the next day speculated that the cause of the blast and resulting fire was due to an accumulation of dust. The blast, "lifted two walls clean out of place and threw some of the debris across the river." By about 6 pm in the evening of the 11th, "a portion of this building collapsed, sending a huge shower of sparks over the city. The flames shot several



Courtesy PCMA

Early morning, Dec. 12th . Fire still out of control with most of the walls collapsed.

hundred feet into the air and drove nearby spectators and volunteer workers to cover. It was one of the spectacular features of the fire. The falling snow probably saved the city from further damage as the burning brands fell in every direction." *Examiner, Dec. 12, 1916 p. 1*

Below is the casualty list published in the Peterborough Examiner the following day:

"The Known Dead"

*Edward Howley - body recovered yesterday afternoon. Married
Vincent Pornalo - 48 Jackson Avenue, died yesterday, St. Joseph's Hospital. Married.*

Domonic Martino - 284 Smith Street. died 5:30 yesterday afternoon, Nicholls Hospital, Married.

Walter Holden - 344 Euclid Avenue, died yesterday afternoon, Nicholls Hospital, Married.

Philip Carboni - Victoria Avenue, died this afternoon, Nicholls Hospital.

Thomas Parson - Body recovered later this afternoon.

Missing (Undoubtedly dead)

Wm. Mesley - 247 Wescott Street

*Jas. W. Gordon -
253 Stewart Street
Jas. Foster - Union Street
Ernest Staunton -
20 Benson Avenue
Dennis O'Brien -
662 Harvey Street
William Hogan -
662 Harvey Street
Alex McGee -
Galway Township
W.G. Vosbourg -
352 Simcoe Street
Wilber Kemp -
Sherbrooke Street
John Conway
Dan Nicholls.*

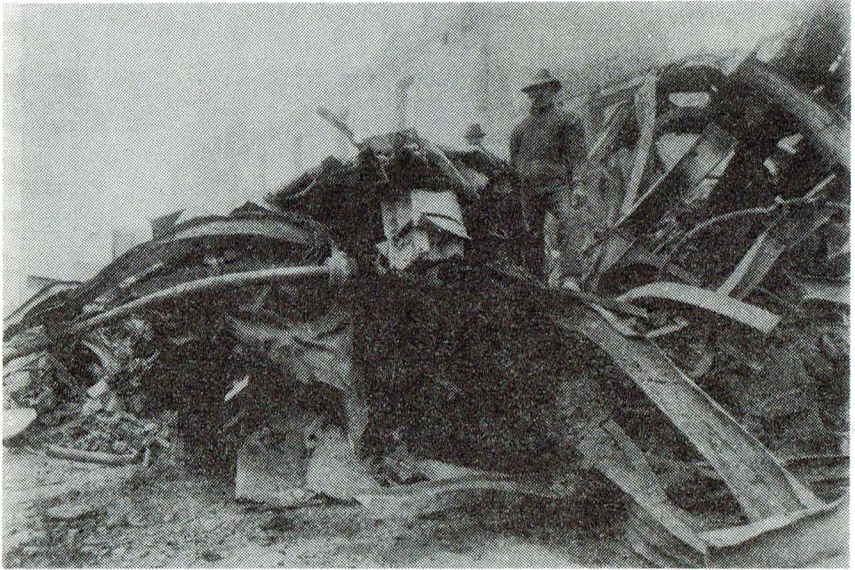


The burned out shell of the "fire proof" warehouse.



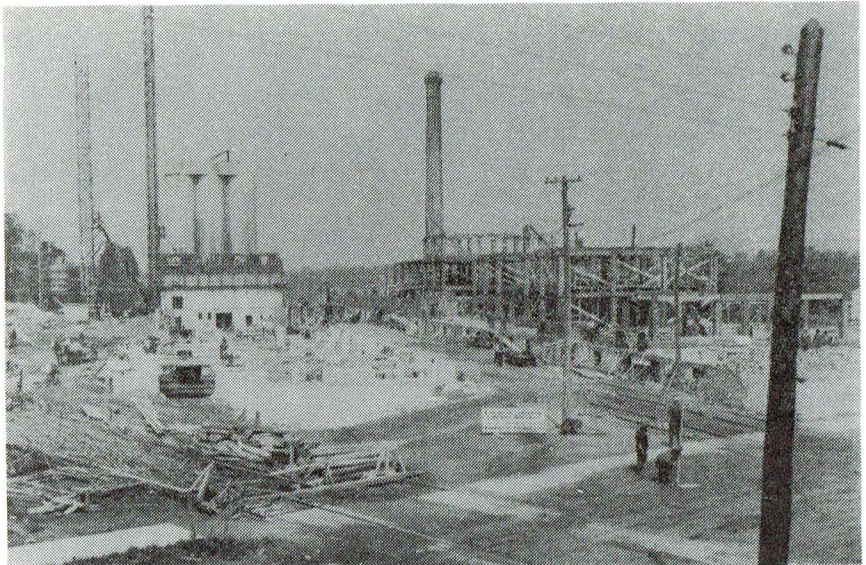
Aftermath, December 13, 1916

Courtesy PCMA



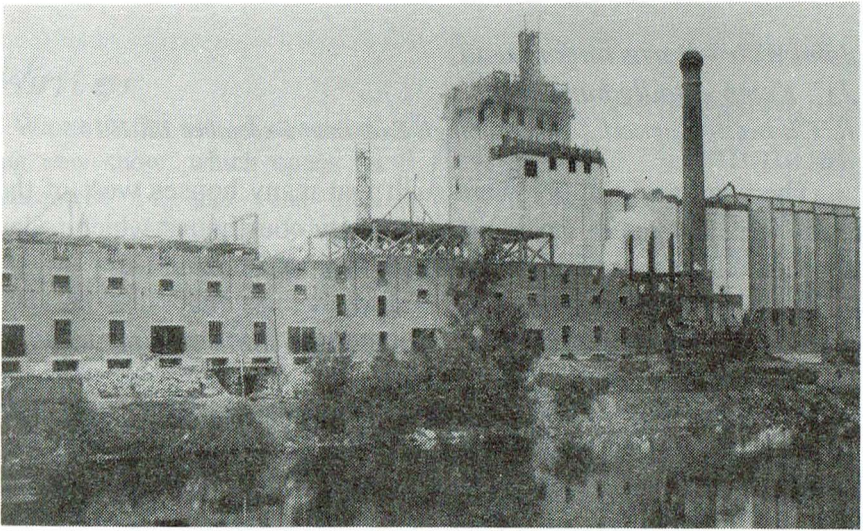
Courtesy PCMA

The only portions of the plant not completely destroyed were the grain silos on the north west corner.



Courtesy PCMA

The reconstruction after the debris from the fire was cleared. The primary contractor for the reconstruction was the Canadian Leonard Construction. Co.



Courtesy PCMA

When completed, the 'new' Quaker Oats appeared little different from the original.

"The Injured"

- R. Healy 328 Euclid Avenue, has fractured skull.*
J.W. Walsh - 547 Rogers Street, broken leg and jaw.
J. Houlihan - 501 Sherbrooke Street, delirious last evening.
J.W. Tetreau - 505 Bethune Street, badly burned about face and limbs.
P. Nicola - Badly burned about face and arms.
Michael Cacavella -506 Elm Street, badly burned.
Fred Cacavella - 506 Elm Street, severely burned.
Edw. Bedding 57 Concession Street, arms and head severely burned.
W. Garvey - 17 Cricket Place, seriously burned.
Mauro Giardini - 506 Parnell Street, not serious.
Jas. Murphy - 108 Dufferin Street was taken home after being treated at hospital.
Patrick O'Connell - 45 Parnell Street, badly burned, injuries not fatal, married.
Michael Long - Hands and face severely burned.
L. Robbins - Slight burns
Miss Eva Booth - 176 Sherbrooke Street

John Weir - Burns on forehead.

J.C. Kemp - Badly burned.

R. Chowen- Burned." Peterborough Examiner December 12, 1916

The results of the fire were such that many houses west of the plant were damaged, including the county courthouse which today sports a different roof line than it had prior to the fire.

There was speculation shortly after the fire that Quaker Oats would not rebuild the plant but relocate to a more suitable location because of the congestion resulting from the rail lines crossing Hunter Street into the old plant and the resulting traffic snarls. The city therefore decided to build a new bridge on Hunter street as an incentive to remain. In addition, when the new plant was rebuilt it had the most advanced fire suppression system of its time. ❧

Excerpt from : Who's Who and Why, 1916

PAYNE, William Lazarus, K.C., B.A., M.A.

Barrister. Born Cobourg Ont., Dec. 8, 1847. Son of W.L. and Eliza (McBrien) Payne. Educated: Local Public Schools: Victoria University (B.A., 1867: M.A. 1872): Royal Military School, Kingston. Called to the Ontario Bar, 1872: created K.C. 1908. Ex-member Cobourg Town Council: Councilor Colborne, many years: member Union Board of Education: ex-Reeve: ex-Warden of the United Counties Northumberland and Durham. Lieutenant. 40th Regiment. and served in 1st Provis Battalion Rifles during the Fenian Raids (medal). Married Emma J. Powell. daughter of O.W. Powell. Cobourg August 1874. Conservative: Methodist. Address: Colborne Ont.

ROGERS, David McGregor, M.A.

Barrister and Solicitor, Times Bldg., Victoria: Chairman, Uplands, Ltd.: President Rogers & Co., Ltd.: President, Canada Western Chartered Corporation. Born Peterboro, Ont. May 4, 1874, son of Col. H.C. and Maria (Burritt) Rogers. Educated: Trinity College School. Hort Hope: Trinity University, Toronto. Called to British Columbia Bar, 1901: practised in own name, Victoria, 1901-1904; partner, Barnard & Rogers. 1904-1906: retired from general practice, 1906, doing only corporation practice. Secretary Conservative Association, 1902. Married Mary Ferriss, Tacoma, 1904. Clubs: Union: Pacific: Victoria Golf: Royal Victoria Yacht. Recreations: golf, cricket. Conservative: Anglican. Address: Beach Drive, Oak Bay, Victoria, B.C.

Winter

Winter is the title of our exciting new show, which opens on December 14, and runs until January 19. Produced by staff here at the Museum, the show looks at winter both through the eyes of our First Nations, and

also from the viewpoint of European settlers, who may never have experienced such awful cold until they arrived here! Winter is not just about surviving the cold and snow: it also tells about winter pastimes, like hockey, curling, skating and snowshoeing, and about First Nations' games like the Snow Snake.

So if you want to come in from the cold, spend some time in the warmth of the Museum and learn more about winter.

Kim Reid, Curator

New Heritage Pavillion Nearing Completion

In 1996, the Kaye Funeral Home announced its intention to demolish an adjacent apartment building. However, because this structure had been one of Peterborough's first churches -- A Wesleyan Methodist Church built in 1843 as the predecessor to today's George St. United -- a structural and heritage assessment was done by PACAC and a local timber framer, Didier Schwartz. They determined that the massive white pine timber frame was sound and of historic significance. Consequently, during demolition the contractor salvaged roof trusses, posts, beams, wooden pegs, and other parts and transported them to the PCMA grounds.

Mr. Schwartz developed a design for the Pavilion that incorporates most of the salvaged timbers, and is a modified reconstruction of the Church's original framework. The finished structure is approximately 40'x 60', with 12' high eaves. It also has a concrete pad floor, a cedar shake roof, and is wired (to provide electricity for sound systems, etc.). The shape of the hill has been gently altered to create a natural amphitheatre. The Heritage Pavilion will be a great asset to Peterborough and the PCMA.

Peterborough Centennial Museum & Archives

300 Hunter St. East,

P.O. Box 143

Peterborough, Ontario K9J 6Y5

Phone: (705) 743-5180

FAX: (705) 743-2614



Campbellford-Seymour Heritage Society

Our Millennium Project: A New History of Campbellford- Seymour

Campbellford-Seymour Heritage Society has undertaken to compile a new and comprehensive history of the area, to be completed by the year 2000. This millennium project is under the competent direction of Margaret Crothers, Jean Tilney, Gwen Dubay, and Peter Wilson, with co-operation and contributions from other society members. Anyone with documents, information, photographs, or other material for possible inclusion is asked to contact one of the committee members or to drop into the Centre on any Wednesday between 10 and 4 o'clock. The plan is to spend this winter collecting the material, then to

write and edit the book over the next year in preparation for publication and sale to the public by the summer of 1999.

Tentative Chapter List

1. Humble Beginnings - Pre-1600s
2. Early Settlers
3. The Founding of Campbellford-Seymour
4. The River and Its Associated Businesses
5. Other Businesses in the Area
6. Noteworthy Citizens
7. Recreation and Sports
8. Entertainment and Amusements
9. Agriculture
10. Churches and Religion
11. Schools and Education
12. Local Flora and Fauna
13. Old Timers in the Area
14. Pictures of Campbellford-Seymour
15. Communications
16. Clubs and Organizations
17. Women's Institutes and Tweedsmuir Histories

- 18. Newspapers
 - 19. Hospitals and Health Services
 - 20. 'Bad Boys'
 - 21. Local Characters
 - 22. Everyday Life and People
 - 23. Statistics
 - 24. Death and Dying
 - 25. Ghost Stories
 - 26. Politics
 - 27. Local Heroes
 - 28. Military History
 - 29. Museums
 - 30. Art and Architecture
 - 31. Looking Backwards and Forwards
 - 32. To Be Announced
- Contacts General Information -
 Jean Tilney 653-4181
 Gwen Dubay 653-0561
 Archives - Marg Crothers
 653-3870
 Artifacts - Margaret Macmillan
 653-3656
 Dues: \$5.00 (Make cheques
 payable to Campbellford/Seymour
 Heritage Society)
 Send to:
 Campbellford/Seymour
 Heritage Society
 113 Front St. N
 P. O. Box 1294
 Campbellford, Ontario
 K0L 1L0

WANTED



Recipes wanted for fundraising cookbook in support of the Ancestral Research Centre.

We are looking for favourite family recipes with a short story or history of the ancestor who used it. Included will be the names of the ancestor and submitter.

To submit recipes or for more information contact:

Stephen Gavard
2036 Moncrief Road
Peterborough, Ont.
K9K 1N8
(705) 741-3888
 stephen.gavard@bbs.thebcc.org

The Peter Robinson Emigration 1825



By Art Dainton

Peter Robinson was born in New Brunswick of United Empire Loyalist stock. His younger brother John Beverly Robinson was the Chief Justice of Upper Canada. Robinson led the first experiment in assisted emigration with 571 Irish to the Bytown (Ottawa) area in 1823. In 1825 support was mustered for a second, much larger emigration, this one to the Valley of the Trent in the area now known as Peterborough County.

There were over 50,000 applications from families in Ireland to participate in this project. Over half of the emigrants selected were from the Blackwater River Valley in the northern part of County Cork. Robinson broke many of the rules he was meant to follow in his selection of the emigrants. For one, the group included skilled tradesmen as well as farmers, which it was meant to be composed of. This deviation, although controversial at the time, produced a

much more balanced and workable pioneer society in Upper Canada.

In May of 1825, nine ships set sail from Cork Harbour laden with 2,024 emigrants, 710 of them adults, 1314 children under 21 years of age. The group did not arrive at Scott's Plains, the present site of Peterborough, until the fall of 1825. Once on Scott's Plains, the emigrants were given their allotment of 100 acres for each head of family. The families were divided by townships as follows: Emily 142, Ennismore 67, Douro 60, Otonabee 51, Asphodel 36, Smith 34, Ops 7 and Marmora 6.

The 1825 Robinson emigration is detailed in length in a thesis written by Howard Pammett, in 1934. In doing the research for the thesis Pammett approached then Peterborough Librarian Mr. Delafosse. Delafosse directed him to the basement of the library, which turned out to contain boxes upon dusty boxes of original records, letters and other documents pertaining to the Peter Robinson emigration. These papers are now, in part housed in the Peterborough Centennial Museum and Archives. Trent Valley Archives is currently preparing the complete thesis for publication.

The following is an extract of the ships passengers lists, including original spellings:



Albion - 1825

Family	Age	Township
BARRY,		Asphodel
James	38	
Bridget	37	
Margaret	16	Catherine 7
John	5	Ellen 2
BRIEN,		Asphodel
John	40	
Margaret	40	
Thomas	15	Ellen 12
Catherine	9	Johanna 1
BURGESS,		Smith
Daniel	44	
Avice	44	
William	23	Emanuel 22
Sabina	21	Elizabeth 20
Mary Anne	19	Henry 18
Daniel	15	Avice 10
CLANCY,		Otanabee
John	30	
Eliza	30	
Ellen	16	William 11
John	5	Johanna 3
Thomas	1	
COLLINS,		Emily
John	40	
Johanna	40	
Michael	20	Timothy 18
John	18	John 16
Catherine	14	Edmond 12
James	8	Bridget 3
Maurice	1	
CONNOR,		
Daniel	33	
Bridget	26	

Judith 16	Margaret 14	LOWES,	
James 12	Ellen 8	Michael 44	
Bridget 5		Sarah 42	
CONNER,		Michael 28	Richard 24
Jeremiah 35		Dorothy 20	
Mary 30		LYNAN,	
Margaret 9	Jeremiah 7	Patrick 22	
Johanna 3		Ellen 21	
DALY, Asphodel		LYNCH,	Gore of Emily
James 30		Patrick 32	
Ellen 26		Deborah 30	
Patrick 21	Mary 2	Mary 14	Catherine 12
HEALY,	Asphodel	James 10	Eliza 8
Patrick 35		Ellen 6	Thomas 3
Eliza 36		Deborah 1	
Mary 19	Thomas 17	McDONALD,	Smith
John 15	Judith 13	William 34	
Ellen 11	Eliza 9	Mary 32	
Margaret 2		John 16	William 14
KEEFE,	Otanabee	Alexander 11	Charles 8
James 38		Patrick 5	Michael 3
Anne 29		Walker born 23 Mar. on land.	
Catherine 18	James 17	NAGLE,	
Ellen 13	Eliza 12	David 37	
Timothy 9	Mary Anne 5	Julian 30	
KEEFE,		Richard 16	Ellen 13
Mary 48		John 10	Garrett 7
MarY 17	John 15	Margaret 5	
KERNY,		REGAN,	Emily
Michael 30		(alias Thos. Shenick)	
Mary 32		John 32	
James 28		Norry 30	
Margaret 20	John 5	Abigial 16	Mary 6
LINGANE (LANGANE),	Emily	REILY (RYLY),	Asphodel
Bartholomew 36		William 35	
Ellen 18	Mary 16	Elizabeth 30	
Jeremiah 13	David 12	Thomas 13	Joseph 11
Patrick 10	Eliza 6	John 8	Mary 4
Margaret 3		Jeremiah 2	Johanna 1
LINGUANE		RYAN,	Otanabee
Edmond 26		William 30	
LOWES,	Emily	Catherine 30	
George 40		Michael 13	William 5
Hannah 32		Ellen 3	
Zachariah 20	Rebecca 8	Catherine born on land	
George 6		SHEA,	

Daniel 34
 Catherine 32
 Mary 14
 Jeremiah 9
 SHEEHAN,
 Daniel 40
 Ellen 39
 Mary 21
 Daniel 15
 Judith 9
 SHEEHAN,
 John 40
 Bridget 36
 Cornelius 21
 Patrick 14
 John 6
 SHENECK,
 James 31
 Johanna 28
 Mary 2
 STACK (Stark),
 Thomas 40
 Mary 44
 Honora 20
 Maurice 13
 Mary 6
 SULLIVAN,
 Michael 28
 Judith 26
 Catherine 7
 Mary 2
 SWEENEY,
 (alias Michael Sullivan)
 Michael 37
 Margaret 32
 John 16
 Mary 9
 Denis 1
 SWEENEY,
 Timothy 34
 Johanna 30
 Honora 11
 Catherine 4

Daniel 12
 Nancy 2

Elizabeth 17
 Patrick 10
 Daniel 1

Douro

Timothy 18
 Michael 8
 Mary 16

Emily

Richard 16
 Thomas 10
 Johanna 4

Asphodel

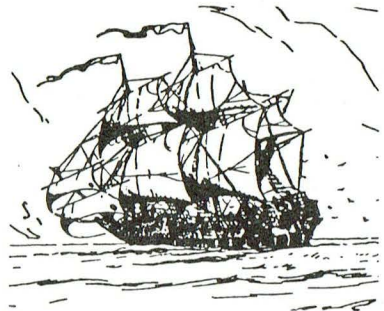
Michael 5

Douro

Richard 13
 Catherine 5
 Bridget 1

Douro

Mary 9



Amity

Family	Age	Township
BUCKLY		Emily
Michael	31	
Bridget	27	
Honora	15	Ellen 12
Michael	10	
Manus	3	
Benjamin	1	
BIGBY, (Begly)		Emily
Moses	45	
Norah	44	
CALLAGHAN,		
Thomas	42	
Judith	36	
Thomas	19	John 17
Mary	15	Patrick 13
Jeremiah	10	Margaret 8
Catherine	6	Johanna 2
CONRY,		Douro
David	34	
Catherine	30	
Edmond	11	Patrick 9
David	5	Catherine 3
COSTELLOE,		Ennismore
Michael	43	
Honora	40	
James	24	Daniel 23
Michael	21	Patrick 19
Mary	16	John 11
Maurice	8	
CROWLY,		Otanbee
Patrick	45	
Elizabeth	40	

Mary	32			John	40		
James	19	Honora	16	Mary Anne	40		
David	14	Michael	12	Eliza	16	Jonathan	15
Catherine	10			Louisa	14	Mary	12
Patrick	8			Michael	10	John	8
Julia	4			Daniel	7	Richard	1
FITZGERALD,		Gore of Emily		DRISCOLL,		Otanabee	
William	30			Jeremiah	40		
Bridget	30			LEARY,		Otanabee	
William	28			John	40		
Mary	14	Richard	12	Margaret	38		
William	6			Mary	22	Margaret	20
John	5			Daniel	18	Patrick	16
GALVIN,		Otanabee		John	14	Fanny	8
John	19	Left the settlement		James	4		
Margaret	20			McCARTHY,		Gore of Emily	
GORDON,		Emily		Owen	38		
John	44			Margaret	36		
Mary Anne	42			Margaret	16	Catherine	15
Samuel	20	Robert	19	Mary	14	Michael	13
John	17	Mary Anne	15	Jeremiah	9	James	6
Elizabeth	14			Hannah	2		
James	10			MURRAY,			
Alexander	6			Thomas	35		
Henry	3			Honora	30		
HALLAHAN,		Otanabee		Judith	14	Margaret	12
Thomas	44			Mary	9	Catherine	
Mary	30					Born 9 Aug. in Otanabee	
James	17	Michael	16	OAKLEY,			
Denis	13			William	30		
Hannah	9			Catherine	24		
ENGLISH (English),		Asphodel		John	22	Grace	24
Richard	42			SCULLY,			
Judith	36			Daniel	31		
Nicholas	20	Mary	17	Catherine	29		
Bridget	14	John	11	John	8	Daniel	6
Johanna	6	Patrick	1	Bartholomew	5	Catherine	2
KEARNEY,		Otanabee		SHANAGHAN,		Gore of Emily	
Denis	36			Denis	33		
Mary	30			Honora	30		
KENNELLY, Otanabee				William	15	Daniel	13
John	34			Florence	8		
Ellen	35			SULLIVAN,			
William	12	Patrick	8	Patrick	24		
James	3	John	1	STACK,			
LANCASTER,		Emily		John	39		

Peggy	37		
Thomas	15	Mary	12
Catherine	9		
SULLIVAN,		Gore of Emily	
Bartholomew	43		
Mary	34		
John	21	Thomas	16
Cornelius	13	Jeremiah	7
Ellen	2		

Jeremiah	20	Ellen	18
Owen	16	Dennis	14
John	12		
CALLAGHAN,		Asphodel	
Timothy	34		
Nancy	29		
Ellen	14	Jeremiah	11
John	8	Timothy	3
Mary	1		

CASEY,		Emily	
Thomas	35		
Johanan	30		
James	11	Mary	9
Timothy	7	John	5
Johanna	1		

CONDON,		Otanabee	
James	43		
Margaret	38		
Richard	24	Judith	18
Mary	16	William	12
Honora	6		

DALY,			
John	46	Died on land, 17 Feb	
Mary	40		
SMITH,			
John	21		
Bridget	20		
Henry	19		
James	12	Michael	10
Eugene	9	William	5
		Died 9 April/26	

George	1		
DUNHILL,			
Michael	28		
Ellen	30		
John	14	Thomas	12
Catherine	10	Mary	8

FOLEY,			
William	44		
Ellen	24	William	22
Thomas	18	Daniel	16
GILMAN,			
Edmond	38		

Mary	36		
Rebecca	18	Ellen	16
Richard	15	John	14
Mary	13	Sylvester	9



John Barry - 1825

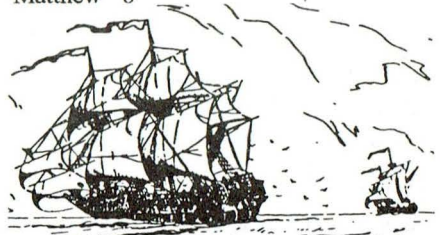
Family Age Township

BARAGY,			
Patrick	35		
Margaret	29		
Patrick	4		
BLACKWELL,		Emily	
John	41		
Prudence	39		
John	22	Margaret	19
Catherine	17	James	15
Mary	13	Abigail	11
William	8	Anne	6
Edward	3		
BOLAND,			
Jeremiah	34		Emily
Mary	32		
Edward	12	Mary	7
Joseph	5	Ann	4
Thomas	2		
CALLAGHAN,		Emily	
John	44		
Norah	38		
David	23	Cornelius	22

Elizabeth 7	Edmond 3	Daniel 41	
GROVES,	Emily	Catherine 36	
Thomas 20		Mary 15	
Margaret 46		John 14	Drowned 21 May/26
Mother died 27 Sept/26		Roger 13	Sarah 12
Abraham 17	Margaret 13	James 7	
James 11		MALONEY,	
HENNESSY,	Emily	Henry 32	
Thomas 38		Hannah 32	
Nancy 30		Andrew 9	Catherine 7
John 17	Thomas 15	Mary 4	Margaret 1 Died
Michael 13	Bridget 11	McAULIFFE,	Emily
Daniel 7	William 5	Cornelius 32	
Patrick 4		Ellen 26	
HOGAN,	Otanabee	Johanna 15	Mary 13
David 29		James 12	Owenn 6
Sarah 23		MULCAHY,	Emily
Catherine 6	Mary 1	William 39	
HURLY,	Emily	Mary 38	
James 35		David 17	
Mary 30		Michael 15	Patrick 12
Jane 9	Thomas 7	Elizabeth 8	William 4
Patrick 3	Died at Kingston	O'BRIEN,	
KELCHER,		Martin 44	
John 28	Drowned 31 May/26	Honora 34	
Ellen 28		John 17	Patrick 15
Denis 18	Mary 9	Mary 13	Bridget 1 Died
Jane 6	Michael 2	OWENS,	Emily
LANE,	Smith	David 45	
John 46		Bridget 36	
Ellen 42		John 20	Richard 18
Cottrell 22	Catherine 20	Robert 16	Boyle 12
Ellen 18	Helena 10	David 8	Anne 6
LEARY,	Asphodel	Thomas 1	
Timothy 50		REGAN,	
Norah 35	John 30	Jeremiah 35	
Mary 28	Patrick 14	Catherine 32	
Norah 12	Timothy 7	Patrick 16	Norah 13
Juith 3		Mary 10	Michael 6
MAHONY,		Daughter born	
James 36		RYAN	Emily
Nancy 34		Patrick 32	
Denis 15	James 13	Elizabeth 21	
Julia 10	Nancy 7	Timothy 21	John 19
Daniel 5	Jeremiah 1	William 14	Bridget 25
MOLONY,		Elinor 18	Patrick 2

James	1		
SHEA,			
Edward	32		
Ellen	31		
Edward	12	Mary	5
Patrick	4		
SHEA,		Asphodel	
Thomas	44		
Bridget	39		
Darby	18	Michael	16
John	14	Mary	12
Thomas	9	Denis	2 Died
SLATTERY,		Otanabee	
James	26		
Mary	24		
Catherine	5	Judith	3
John	1		
SULLIVAN,			
Cornelius	44		
Patrick	20	John	18
Mary	16	Elizabeth	14
Bridget	12		
SULLIVAN,		Smith	
John	41		
Ellen	36	Julia	15
Ellen	20	Bridget	12
Eugene	14	Emily	
SULLIVAN,			
Richard	42		
Ellen	38	Honora	17
Michael	19	Catherine	12
Thomas	14	Michael	6
James	9		
THORNHILL,			
Robert	21	Hannah	8
TWOMEY,		Mary	2
Patrick	33		
Mary	32	Smith	
Patrick	9		
Ellen	7		
Ellen	30		
WALSH,			
John	36		
Mary	35		
Thomas	15	John	12
Margaret	10	Michael	7

Bartholomew	3		
WALSH,		Asphodel	
Richard	33		
Elizabeth	24		
Mary	3		
YOUNG,		Smith	
Francis	44		
William	24	Eliza	22
John	20	Samuel	18
Honora	16	Patrick	14
Francis	12	Robert	10
Matthew	8		



BRUNSWICK - 1825

Family	Age	Township
BOLSTER,		Smith
John	40	
Grace	38	
Thomas	17	Catherine 15
William	13	Eliza 11
John	9	Nathaniel 6 mos.
BOLSTER,		Ennismore
Joseph	45	
Margaret	25	John 22
Joseph	20	Thomas 19
William	17	Richard 13
Eliza	11	Nathaniel 8
BOOT, also known as BOATE		Emily
James	40	
Catherine	40	
William	15	Ann 13
Eliza	11	Fanny 9
Catherine	5	James 1
BUCKLEY, John	41	
replaced by Maurice FITZGERALD		
Johanna	32	Timothy 13
Catherine	10	John 9

Mary 6	Ellen 1	Francis 12	Catherine 9
CLEARY,	Otonabee	Elizabeth 6	Arthur 1
William 32		DRISCOLL,	Ennismore
Mary 32		Cornelius 47	d. 1825
Michael 6	John 1	Johanna 45	d. 14 Oct 25 at Depot
COLLINS,	Ennismore	John 28	James 24
Patrick 34		Ellen 22	d. 1825
Julia 33		Julia 17	Norry 13
Mary 16	Michael 14	Cornelius 5	
John 9	Eliza 4	DRISCOLL,	Ennismore
Catherine 2		Denis 43	
CONDON,	Douro	Mary 40	
David 50	d. 1825 on trip	Cornelius 20	Mary 18
Mary 45		Murtough 15	Denis 7
Michael 24	Bridget 22	John 5	Margaret 1
Margaret 20	Ellen 16	DRISCOLL,	Ennismore
Johanna 12	John 9	Michael 45	Norry 28
Patrick 7		Patrick 19	Denis 15
CONDON,	Ennismore	Ellen 11	Lawrence 2
John 44	d. 1825 on trip	EGAN,	Otonabee
Johanna 44		Thomas 32	Frances 25
William 20	Richard 17	Mary 10	Anne 8
John 11	David 5	Thomas 1	
Michael 2		FITZPATRICK,	Emily
CONNELL,	Emily	Denis 40	
Callaghan 40		Margaret 40	Denis 20
Judith 30	Denis 14	Michael 19	Mary 16
Mary 6	Margaret 9 mos.	Johanna 14	Ellen 12
CONNER,	Emily	Elizabeth 10	
Timothy 39		FITZPATRICK,	Asphodel
Eliza 37		John 30	
Eliza 19	Jane 17	Elizabeth 22	
William 14	Mary 11	Bridget 6	Mary 5
Edmond 9	Ellen 6	John 3	
Margaret 3		Timothy b. 14 Nov 26	
CRONIN,		FLYNN,	Douro
Jeremiah 27		Cornelius 43	
replaced by James HARGROVE		Margaret 40	widow
Catherine 22		James 24	Ebby 17
Ellen 4	Eliza 2	Mary 12	Cornelius 5
DONOGHUE,	Ennismore	FLYN,	Emily
Arthur 45		William 60	d. 12 Sep 26
Abby 40		John 24	Daniel 20
Daniel 23	Timothy 19	Mary 16	Johanna 13
John 17	Thomas 15	Nancy 11	
		FOWKE,	

Robert	45	no record, d. 1825	Cornelius	35	
Nora	30	married Tim CRONIN	Sarah	30	
Michael	12	Anne 8	Johanna	19	Eliza 16
Catherine	7	John 4	Margaret	14	Patrick 14
GRADY,		Asphodel	brother to Cornelius		
John	35	d. 24 Sep 26	MAGRATH,		Emily
Catherine	34		John	28	
Judith	21	James 19	Ellen	25	
Johanna	16	Charles 12	John	4	Redmond 1
Maria	11	Catherine 8	MASON,		
John	3		Ellen	20	no record
HORNEY,			Nicholas	1	
William	45	went to Montreal	MEANY,		Otonabee
Anne	40		William	49	
Edward	16	William 9	Ellen	19	
John	7	Anstey 2	Jane	17	John 16
HOWERAN,		Ennismore	McCARTHY,		Asphodel
Cornelius	33		Charles	34	
Mary	32	Daniel 13	Bridget	32	
Denis	10	Mary 4	Catherine	10	William 7
Connors	2		Charles	3	
HURLY,		Emily	McCARTHY,	Emily	
Patrick	42		John	48	
also known as Pat	HERLIHY		Margaret	35	
Ellen	36		Florence	20	Michael 15
Patrick	18	Timothy 16	Charles	11	James 9
William	13	Mary 11	Owen	7	Margaret 2
Jeremiah	8	Ellen 3	McGUIRE,		Ops
KEILY,		Emily	James	38	
Owen	35		Hanah	32	
Mary	37		Margaret	12	Hanah 6
Ellen	14	Timothy 13	William	3	
Margaret	12	David 9	MILES,		Asphodel
Mary	5		Thomas	35	
LEAHY,		Asphodel	Honorah	30	Michael 11
Michael	41		Anne	9	Jeremiah 3
Catherine	36		Catherine	2	
David	20	Ellen 18	MURPHY,		Emily
Catherine	17	James 15	Jeremiah	35	
Bridget	9	Honorah 7	Susan	30	Charles 8
Mary	2		John	5	
LEWIS,		left at Cobourg	MURPHY,		Asphodel
Patrick	30		William	44	
Bridget	30		Ellen	40	
Catherine	5	Patrick 2	Honora	20	John 20
LINE,		Emily	Anne	12	Catherine 9

NELIGAN,		Ramsey	Margaret 22	
Thomas 32			Mary 14	Margaret 11
Catherine 27			Bartholomew 9	Michael 5
William 6	Mary 4		Mary 3	Catherine 19
NUNAN,		Verulam	SHINE,	Smith
Charles 45			Daniel 46	
Eliza 40			Ellen 45	
Johanna 21	Ellen 19		Mary 24	Michael 19
James 17	Jeffrey 15		Daniel 17	John 15
Margaret 13	Nancy 10		Denis 14	William 12
William 6	Jeremiah 3		Ellen 10	
O'BRIEN,		Otonabee	St. LEGER,	Ennismore
John 38	d. 24 Sep 26		Margaret 30	
Margaret 28	d. 11 Dec 26		Pakenham, wife of Thomas SULLIVAN,	
John 16	Denis 14		John 30	
Mary 10	Ellen 1		Catherine 30	
	d. 30 Sep 25		Ellen 12	John 1
POWER,		Otonabee	SULLIVAN,	Emily
Richard 40			John 36	
Frances 40			Margaret 32	Jeremiah 7
Ellen 21	Mary 19		Denis 5	James 2
Eliza 16			SULLIVAN,	Emily
RAHILLY,		Otonabee	William 44	
Thomas 36			Judith 40	
Margaret 30	Patrick 8		Edmond 19	Mary 17
Johann 6	John 1		Elizabeth 15	Denis 12
RIORDAN,		Asphodel	Ellen 9	Johanna 6
John 38			John 3	
Catherine 36			WALSH,	Douro
Richard 19	Catherine 17		Widow 50	husband d. 1825
John 15	Michael 12		John 26	Margaret 23
William 9	Thomas 4		sister	
Patrick 2 mos.			Mary 20	
ROCHFORD,		Emily	Johanna 18	Edmond 16
James 34			WYNNE,	Emily
Bridget 30			Richard 54	
Peter 10	James 6		Elizabeth 46	
Michael 2			Henry 26	Robert 24
SCANLON,		Asphodel	Richard 22	Anne 18
William 42			Elizabeth 16	George 13
Catherine 36	d. 1826			
Patrick 21	Mary 18			
John 15	Thomas 12			
Bridget 8	William 6			
SHEEHAN,		Ennismore		
Joseph 32				



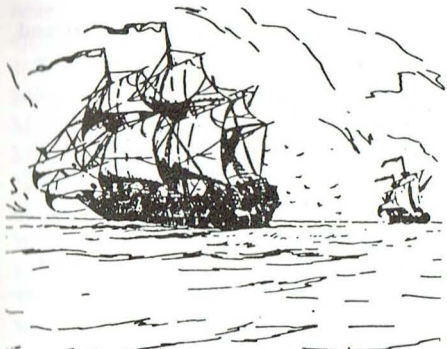


ELIZABETH - 1825

Family	Age	Township	Family	Age	Township
BOURKE,		Emily	Thomas	40	
Simon	38		Johanna	40	
Catherine	37		Denis	19	
Edmond	15	Nancy 14	Catherine	16	Jeremiah 13
Jeremiah	12	Mary 10	CONNELL,		Smith
James	7	Margaret 5	Daniel	35	
Michael	3	John 1 wk.	Mary	30	
BUCK,		Otonabee	Norah	14	Catherine 12
George	45		Denis	6	John 5
Mary	40		Philip	2	
Thomas	18	William 16	CONNELL,		Emily
George	13	Ellen 8	Daniel	40	
John	6	Patrick 2	Eliza	36	
BUCKLY,		Goulbourne	George	20	James 17
Timothy	34		Eliza	14	Mary 11
Julia	20		Daniel	8	John 5
Timothy	14	Catherine 9	Timothy	2	
Margaret	6	Margaret 17 sister	CONNELL,		Goulbourne
CAHIL,		Ennismore	William	34	
Thomas	38		Margaret	30	drowned 1825
Johanna	36	John 17	Michael	18	Mary 13
Michael	15	Mary 14	Margaret	16	Judith 7
Johanna	9	Thomas 4	Norah	10	Ellen 3
James	1		William	5	
CARTHY,		Smith	CROWLEY,		Smith
Jerry	45		Cornelius	34	
Elizabeth	45		Hannah	34	
Catherine	19	Elinor 17	Florence	15	Cornelius 4
Abigail	15	Mary 13	Timothy	2	
Eliza	10		DONOGHUE,		Ennismore
CARTHY,		Smith	Daniel	48	
			Elizabeth	40	
			Denis	23	Emily
			Maurice	21	Emily

Daniel 19		Emily	Darby 32	
William 17	Johanna 12		Elizabeth 30	
Mary 10			James 4	d. 15 Jul 25 in Bateau
DOWNY,		Emily	Mary 1	
Bartholomew 33			HAMILTON,	
Margaret 29			James 35	remain at Montreal
Mary 14	Owen 11		Catherine 24	
John 6	Ellen 5		HANNON,	Smith
Catherine	b. 1 Oct 25		William 44	
DOWNAN,		Tyendinega	Mary 40	
Robert 34			Denis 21	George 19
Eliza 34	Ellen 14		Catherine 18	Frank 15
Eliza 12	Robert 8		Mary 13	
James 4	d. 1825		HOGAN,	Emily
DWYER,		Emily	John 35	
Jeremiah 50			Johanna 32	
Richard 24	Mary 22		Michael 15	Daniel 13
Thomas 20	Edmond 19		Ellen 2	Margaret
John 17	Elinor 15			b. 13 Jun 26
Judith 14	Alicia 10		HOULAHAN,	Emily
Denis 6			Denis 42	
EGAN,		Asphodel	William 20	James 18 d. 1825
Daniel 30			Margaret 17	Michael 15
Mary 34	Owen 10		Johanna 13	Denis 11
May 6	Joseph 2		Thomas 8	
EGAN,		Asphodel	LEE,	group deserted
Patrick 26			James 30	
Honora 20			Honora 27	
Timothy 29			John 16	Peter 12
brother, lost in woods 12 Oct 25			Judith 6	James 4
FINN,		Emily	LYNE,	Emily
John 40			Catherine 44	
Catherine 38			Edmond 25	
FLINN,		Emily	also known as Ed CALLAGHAN	
Michael 30			Patrick 19	
Elizabeth 28			also known as Pat CALLAGHAN	
Thomas 6	Connor 2		Margaret 16	Cornelius 13
CASEY,		Ennismore	MADDIGAN,	Emily
Mary 32	sister GALEAVAN,		Owen 60	
Garratt 44			Michael 29	
Mary 36			also known as Bart KENNELLY	
Patrick 20	John 18		James 27	
Michael 16	Catherine 14		Benjamin 24	Mary 22
Garratt 12	Ellen 10		Owen 20	m. Bart KENNELLY
Maurice 7				Denis 18
GUINEA,		Emily		

Matthew 15	Bridget 13		
McCARTHY,	Smith		
Timothy 26	d. 1826		
Bridget 20			
MURPHY,	Ennismore		
Patrick 32	Ellen 40		
Thomas 7	Ellen 1 NAGLE,		
John 40	Emily		
Catherine 40	Catherine 24		
Patrick 19	Mary 14		
ORMSBY,	Emily		
Andrew 40			
Margaret 40	George 20		
Margaret 12			
PIGOT,	Emily		
William 46	died 1825 on trip		
Honora 40	Maurice 25		
	d. on land		
Bartholomew 23	Julia 21		
Ellen 19	Edmond 18		
Daniel 15	John 13		
QUINLAN,	Asphodel		
Patrick 44			
Johanna 40			
John 18	Patrick 16		
David 14	Michael 5		
BRIEN, Mary 8	orphan		
BRIEN, Judith 6	orphan		
TRIHY,	Ennismore		
Patrick 34			
Anne 34			
Mary 18	Ellen 16		
John 14	Anne 8		
Michael 4			



RESOLUTION - 1825

Family	Age	Township
ALLEN,		Douro
Edmond 39		
Bridget 38		
John 19	William 17	
Mary 14	Edmond 7	
Robert 5	Bridget 3	
Johanna 1		
FLEMING,		Douro
John 66		
father in law JOHNSON,		
Bridget 11	granddaughter	
ANDREWS,		Smith
Richard 42		
Susanna 38	Jeremiah 16	
Ellen 12	Eliza 10	
William 7	Frances 3	
ARMSTRONG,		Douro
John 32		
Eliza 30		
Samuel 16	Mary 15	
Francis 9	Thomas 8	
Wheeler 7	Robert 3	
Charles 1		
BARRETT,		Emily
William 35		
Johanna 35	John 13	
Mary 11	William 9	
Norah 7	Johanna 4	
Edmond 1		
BRIEN,		Douro
Maurice 37		
Mary 33		
Morgan 17	Honora 13	
John 11	Thomas 7	
	d. 13 Aug 26	
William 4	Margaret 1	
BRIEN,		Otonabee
Patrick 30		
Honora 30		
William 8	Anne 6	
John 4	David 1	
CARROLL,		Douro
Elizabeth 17		

sister in law BYRNES,				Margaret	25	John	2
George	25			Mary	d. 13 Nov 25		
Kitty	24			DRISCOLL,			Otonabee
Patrick	4	Mary	b. 9 Apr 26	Florence	32		
CASEY also know as CAREW, Emily				Mary	26		
Thomas	43			Denis	6	Margaret	3
Esther	41	Anne	21	Cornelius			
Samuel	19	Sarah	15	HOGAN,			Douro
Richard	13	Thomas	11	William	39		
Esther	9	John	7	Alice	34	Thomas	9
Robert	2			Frances	7	Mary	4
CLANCY,			Emily	Ellen	1		
Patrick	40			KEARNEY,			Otonabee
Mary	33	Thomas	12	Patrick	36		
Denis	10	Maurice	8	Catherine	30		
Daniel	4	Patrick	2	Denis	10	James	8
Martin	b. 1 May 26,		d. 30 Sep 26	Mary	5	Patrick	1
CLEARY,			Otonabee				b. on voyage
William	45			LANE,	left at Lachine for Montreal		
Mary	40			John	23		
Timothy	20	John	17	Mary	24		
Mary	15	Johanna	12	Patrick	1		
William	10	Catherine	3	MAGNER,			Otonabee
		d. at sea		David	32		
CONDON,			Otonabee	Mary	32	John	15
John	30			Catherine	11	David	9
Sarah	24			Mary	4		
Martin	7	Henry	6	MAHONY,			Douro
James	1			Mary	50		
CONDON,			Otonabee	William	26	Michael	24
Thomas	42			Ellen	23	Honora	20
Margaret	40			McCARTHY,			Douro
James	21	Bartholomew	16	James	35		
Patrick	14	Ellen	10	Mary	34		
John	8	Mary	5	James	9	Thomas	6
Thomas	1			John	4	Mary	2 d. on land
COUCHE,			Douro	McCRAITH,			Otonabee
Henry	41			also know as McGrath			
Susanna	32		d. 16 Aug 25 at Depot	John	37		
Susanna	19	Christopher	17	Mary	34	Ellen	14
Henry	15	Mary	12	John	12	Daniel	10
Ann	9	Elizabeth	7	Mary	8	Catherine	4
Jane	3	Thomas	a child died				d. 12 Oct 26
CRANLEY,			Douro	MCCRAITH,			Otonabee
John	30			also known as McGRATH			

Thomas 35	d. 10 Jul 26	Honora 15	John 13
Margaret 28	Redmond 3	Elizabeth 10	Bridget 6
NEVILLE,	Otonabee	WALL,	Marmora
Catherine 18	sister McKOY,	William 48	
John 27	Catherine 24	Mary 36	
Ellen 7	James 5	Anne 19	Mary 16
Catherine 2		William 14	Thomas 12
O'BRIEN,	Douro	WALSH,	no record
Denis 35		Bryan 35	d. 1825 at Cobourg
Bridget 26		Mary 32	
James 5	Johanna 4	married Maurice LONERGAN	
O'BRIEN,	Douro	Edmond 6	Mary 3
Michael 33		Patrick 2	
Gillian 28		WALSH,	Douro
Mary 12	John 8	Robin 38	
Eliza 6	d. 11 Aug 26	Mary 38	
Michael 4		John 17	Thomas 15
O'DOUGHTERY,	no record	Judith 14	Johanna 9
John 37	d. Monaghan	Robert 4	Michael 3
Ellen 26		WILLIAMS,	Douro
Anne 15	Kitty 12	William 20	Michael 19
Judith 5	John 2	Eliza 22	
Mary 26	sister		
O'DONNELL,	Ennismore		
Patrick 40			
Martha 35			
Edmond 25	Catherine 20		
Ellen 15	Patrick 14		
Jane 11	Mary 8		
PURCELL,	Asphodel		
Nancy 40			
Thomas 24	Eliza 22		
Patrick 17	Margaret 15		
John 14	Daniel 13		
Mary 10			
QUINLAN,	Marmora		
John 35			
Margaret 28			
Michael 12	James 10		
Mary 8	Catherine 6		
Nancy 1			
TORPY,	Douro		
William 54	d. 30 Aug 25		
Mary 40			
Thomas 22	Michael 21		
Mary 19	Kitty 18		
		BRISLANE,	Emily
		John 41	
		Margaret 39	
		Margaret 22	Edmond 19
		Honora 17	Elizabeth 15

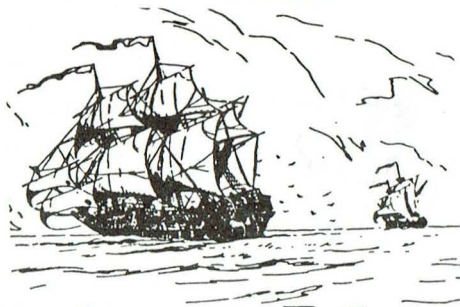


STAR - 1825

Family	Age	Township
AHERN,		Emily
Jeremiah 40		d. 23 Oct 25
Johanna 22		
Margaret 2		b. 1825 Depot, d. 13 Oct 26
BRISLANE,		Emily
John 41		
Margaret 39		
Margaret 22		Edmond 19
Honora 17		Elizabeth 15

Jane 12	Janny 9	Elinor 45	
Nancy 7		Michael 22	
CARROLL,	Emily	d. 21 May 26,	Otonabee River
John 45	d. 30 Sep 26	Deborah 18	Patrick 14
Eliza 38		Mary 13	Margaret 5
James 24	Rebecca 22	DIMOND,	Marmora
Eliza 20	Catherine 18	William 46	
Martha 16	William 15	Margaret 40	
Jane 13	Vaisey 11	Edmond 24	Patrick 22
John 5		John 18	William 16
CLOHANE,	Ramsey	Henry 14	Thomas 10
John 34		Michael 8	
Patrick 15		FINNEGAN,	Emily
CONNOR,	Ramsey	Daniel 30	
Timothy 38	d. 1826	Ellen 30	
Margaret 32		Bridget 14	Timothy 12
Benjamin 12	William 11	Robert 10	Abbey 8
Timothy 10	Margaret 4	James 6	Honora 2
Patrick 1		FITZGERALD,	Smith
CROWLEY,	Douro	Thomas 42	
Charles 34		Margaret 35	
Nancy 32		Edward 18	Charles 16
John 14	Murphy 12	Gerald 14	Milisent 11
Mary 8	Norah 6	John 9	Mary 7
Nancy 3		Margaret 4	Harriet 2
CURTIN,	Ennismore	FITZGERALD,	Ennismore
John 32		William 36	
Margaret 30		Margaret 35	
Joseph 6	John 4	Mary 20	Ellen 19
Mary 2		FLAHERTY,	no record
CURTIN,	Ennismore	James 30	separated from Fortitude
Timothy 34		FOLEY,	Ennismore
Catherine 29	Maryann 17	Daniel 38	
Thomas 15	William 7	Catherine 34	
Cornelius 4	David 1	Mary 14	Kitty 11
DALY,	Smith	Margaret 8	Johanna 4
Owen 43		John 2	Patrick 2
Johanna 36		GEARY,	Emily
Honora 21	Andrew 19	John 41	
Catherine 14	James 13	Ellen 38	
John 11	d. Kinston	William 15	Michael 13
Johanna 8	Eugene 2	James 11	Johanna 8
DEVINE,	Ennismore	Ellen 7	Margaret 2
William 20	brother to Margaret	Mary	b. 5 Feb 26
CURTIN DILLON,	Otonabee	HALY,	Asphodel
Edmond 45		Daniel 48	

Anne	48			Hester	18	Cornelius	15
Thomas	22	Ellen	20	Anne	11	Sarah	8
Mary	16	Anne	14	Jane	6	William	2
Daniel	13			David	b. 15 Aug 25, Cobourg		
HICKY,			Ennismore	SHEA,		Emily	
Johanna	32	widow		Patrick	40		
John	18	James	16	Mary	38		
Patrick	15	Mary	13	Mary	16	Cornelius	14
Thomas	11	Michael	7	John	12	Jeremiah	3
HURLY,			Asphodel	infant	b. 11 Aug 26		
Denis	40			SHEEHAN,		Douro	
Catherine	40	d. 24 Sep 26		Daniel	34		
Bridget	19	Michael	17	Mary	31		
Margaret	15	John	8	Henry	13	John	10
Honora	4	Ellen	2 mos.	Patrick	7	Mary	3
LINEHAN,			Ennismore	Ellen	11 days b. 1825 after ticket		
Denis	54	d. 30 Jun 26		SHEEHAN,		Douro	
Patrick	28	Margaret	21	Denis	38		
		d. 26 Aug 26		Honora	37		
Mark	20	Denis	17	James	9	Honora	8
McMAHON,			Asphodel	Denis	4	Ellen	1
Denis	42			SHOULDISS,		Emily	
Mary	38			Adam	44		
Matthew	20	Timothy	17	Eliza	33		
Mortough	14	James	12	Catherine	20	John	19
Catherine	9	Mary	6	Sarah	16	George	14
MILLER,			Emily	Samuel	10	William	6
George	31			James	2	Adam	1
Anne	28			SWYTZER,		Emily	
Eliza	5	Catherine	2	Tobias	38		
MORRISSEY,			Emily	Eliza	36		
John	40	d. 2 Sep 26		Jane	18	Christopher	16
Catherine	34	John	17	Theresa	15	John	13
Mary	13	Bridget	11	Eliza	11	Tobias	10
Edward	8	Margaret	5	Amos	2	Anna Mary	
Daniel	3	Anne	b. 17 Mar 26			b. 2 Jun 26	
MULLANE,			Asphodel				
Michael	43						
Catherine	42	William	18				
Maurice	20	Thomas	13				
Michael	16	Denis	9				
Mary	11						
RUSSELL,			Emily				
William	43						
Anne	38						



Received Land Grants, but not officially on board any ship.

Family Age Township
Ship, if known

Fortitude

BARRY, **Douro**
John 32
Eliza 29 d. 13 Oct 25 at Depot
Patrick 8 Thomas 2
Infant b. on land

Elizabeth

BOURKE, **Smith**
Patrick 34
Catherine 22 Denis 20
Thomas 17 William 1
b. 6 Jun 26

CLANCY, **Emily**
John

Regulus

CRONIN, **Emily**
Timothy

DEAN, **Smith**
Cornelius

Brunswick

FITZGERALD, **Emily**
Maurice 40
Mary 32

Michael 16 Mary 14
James 11 Margaret 8
Sally 5
FOX, **Emily**
Robert

Brunswick

HARGROVE, **Emily**

James 27
Eliza 22 Mary 7
HEFFERNAN, **Otonabee**
John

HODGE, **Otonabee**

John

HOWARD, **Otonabee**

Patrick

KEATING, **Otonabee**

Nicholas

Elizabeth

LYNES, **Emily**

Patrick 19

Hannah 32 Andrew 10

Kitty 7

MEEHAN, **Douro**

Patrick

SHENICK, **Emily**

Patrick

Amity

STACK, **Ennismore**

James 25

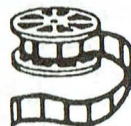
Amity

TWOMY, **Ennismore**

John

T.H.E. MICROGRAPHICS

Mobile Microfilm/Microfiche
Commercial - Medical - Heritage
(705) 745-8304



P.O. 2224 Peterborough, ON K9J 7Y4
905 1st Avenue, Suite 124-214
Lethbridge, AB T1J 4M7



Queries

For members who receive the Heritage Gazette seeking information on ancestors or relatives, two free queries a year are permitted. For those without a subscription or membership in any of the supporting organizations a charge of \$3.00 is requested and cheques may be made payable to the Kawartha Ancestral Research Association.

BELL/MCILWAIN

Seeking any information (especially specific Ulster origin) on family of William Joseph Bell (1803-1855), wife Margaret Jane McIlwain (1806-1897) who emigrated via Quebec 1832 with first two children Joseph (1830-1906) and Elizabeth (1832-1917). Located on N 1/2 Lot 3 Con. 7, North Monaghan Twp. 1833 on; brother-in-law Matthew McIlwain on adjacent half lot. Presbyterians. Joseph Bell and family moved to Minden Twp. c. 1869.

William C. Wonders
2545 Beach Drive
Victoria, B.C.

BOWMAN

John BOWMAN son of Jacob of Butler's Rangers, settled Conc.14 Lot 4 of Burford Twp. ca. 1817. Who was his wife? Where are they buried. Also seek information on John Bowman who married Mary Glover, ca. 1820. Also, William

Bowman, same location, m. to a Rosannah Button. How are they related? Have a large amount of BOWMAN family information, Palatine German, Mohawk Valley, Susquehanna and Niagara River. Willing to share all data.

BOWMAN/FERGUSON

Seeking information on Jacob Bowman, lived Cobourg or Colborne arc, ca. 1850's b. ca. 1834, Scotland Ont.. Who were his parents? He m. Belinda Ferguson, dau. John and Elizabeth Ferguson of Colborne, b. April 17, 1856. Jacob and Belinda moved to Minnesota soon after they got married. Any information on Ferguson family appreciated.

Bill Bowman U.E.
42 Cambridge Dr.
Brantford, Ont.
N3R 5E2

CLARK/MCNEILL

Alexander Clark b. 1822, Toronto, ON, d. 1916 Toronto. Resided in

Oakwood, Mariposa Twp. and
 Cambray Fenelon Twp. m. Mary
 McNeill, b. 1834 in Ireland, immi-
 grated in 1863, d. 1906 in Cam-
 bray. Would appreciate any
 information on their parents and
 siblings.

John H. Clark
 56 Maple Avenue
 Dundas, ON
 L9H 4W4

HUMPHREY

John Humphrey 1813-1885, b. Ire-
 land, m. Sarah Spence. Sarah died
 and buried in Norwood, Peterbo-
 rough County according to family
 story. However, have not been able
 to find date or place of Sarah's
 death. John moved family to Little
 York and later to Wiaron in Bruce
 County. Their son Thomas
 1842-1912 m. Ellen Elliott
 1848-1915 and settled in Arran

Twp., Bruce County, Ontario. any
 information appreciated.

Shirley Hunt,
 Box 442,
 Tara, Ontario
 N0H 2N0

KELLY

Sarah Catherine, b. Oct. 3, 1874,
 Grafton? Was 5 when she and her
 brother and sister, Lee and Louisa
 (ages 8&9) lost both parents and
 went to live with a grandmother. I
 believe that it was grandmother
 KELLY, and uncle with running
 sores on his back also lived with
 them. This grandmother is sup-
 posed to have lived across the road
 from a blacksmith named
 BLACKBURN in the Port Hope
 area. When Sarah was 8, she trav-
 eled by train to the Markham area
 and was raised by the Smith fami-
 ly, the grandmother could no long-
 er look after all of them. I cannot



YORE ORIGINS

Genealogy Research and Instruction

Barbara Samson-Willis, BA, MEd., MLS.

TEL: (705) 653-3780

FAX (705) 653-5243

BOX 1389, CAMPBELLFORD, ON, K0L 1L0

hwillis@oncomdis.on.ca

find births/census/deaths for this family. Do not know parents/grandparents names. Sarah was my great-grandmother. Can anyone help?

Sandra Ogden
14125 Durham Road #57
Box 137, Blackstock
Ont. L0B 1B0
e-mail: ohokay@sympatico.ca

LEGASSICKE

Seeking information of the LEGASSICKE family.

Mary Ann Legassicke died in Peterborough in 1888. I believe she lived with her daughter and son-in-law Alice and Henry Williams. Other family lived in Toronto, Katherine, Rosina, Benjamin, Frederick and Alfred

Shirley Bell
14516-85 Avenue
Edmonton, Alberta
T5R 3Z4

POTTS/VAN AVERY (EVERY)/FINLEY

Alexander POTTS and his wife, Jane LOVAT, emigrated from Ireland abt. 1850. Their son, William Lovat POTTS, m his cousin, Ann Jane ELLIOTT, and lived in or near Peterborough, abt. 1851. Would like to correspond with anyone with information on these families. Who were the parents of

Margaret FINLEY, b. abt. 1820? Who were the parents of H.C. VAN AVERY (EVERY) and his wife, Margaret JOHNSON? Where were they born, where did they marry (bef. 1870) and live?

Joyce Van Avery Franke,
4607 West Rovey Avenue,
Glendale, Arizona
85301-5323 USA
rjfranke@worldnet.att.net

TAYLOR

William Henry TAYLOR M.D. of Peterborough married Mary Helena, dau. of Francis CONNIN, Surgeon, of Otonabee on June 1, 1842. Both William and Mary died in 1946. Was William the son of Josias TAYLOR who settled in Perth, Lanark County in 1816?

Mrs. Mary H. Knox
285 Deloraine Ave,
Toronto, Ont.
M5M 2B2

THOMPSON

I would like to find the families of two great uncles who were born in the Rice Lake area near Peterborough. John W. Fletcher THOMPSON, b. abt. 1847, and Robert Wesley Thompson, b. abt. 1852. Their father was John THOMPSON b. abt. 1817 and their mother was Jane DAWSON, b. January 10, 1821.

The Thompsons operated a steam saw mill on the north shore of Rice Lake. Two of their brothers, James Milton Thompson and Stephen Joseph Thompson, lived in Norwich for a short time. Stephen was a photographer and spent his last years in New Westminister, B.C. (I am in touch with that family). Their sisters were Annie, b. 1841, Martha, b. 1843, who died in 1930, New Westminister B.C. area, Margaret, b. 1845, Agnes, b. 1848 and Eva Jane, b. April 29, 1862 who was my grandmother and lived in the Bailieboro area. I am originally from that area.

E. Eileen French

144 Guildford Cres.,

London, Ont.

N6J 3Y5

(519)472-1852

WILSON

John Wilson and Ella J. LOWERY were married in the Methodist Church in Bobcaygeon on March 16, 1887. On the marriage record, Wilson gave his birthdate and place as December 24, 1858 in Belleville, and his place of residence as Smith Twp. I have been unable to find any information on his parents, William and Mary Wilson, both born in Ireland (1891 census). Any information on this family appreciated.

Bruce W. Taylor

P.O. Box 1568

New Liskeard, Ont.

P0J 1P0

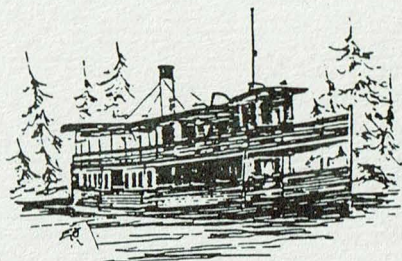
e-mail: btaylor@onlink.net

A brief biography from *Who's who and Why, 1916*

"**Cox, Fran Wallace.** - Secretary. Imperial Guarantee & Accident Insurance Co., 44 King St. West, Toronto, Vice-President Cox & Cummings Ltd. Born Peterboro, Ont. Dec. 7. 1878 son of Aaron A. and Emma J. (Pearce) Cox. Educated: Peterboro; Toronto. With The Robert Simpson Co., Ltd.. Toronto. 1896; Branch Secretary. Canada Life Assurance Co., Cleveland Ohio, 1903: Secretary Imperial Guarantee & Accident Insurance Co.. Toronto since 1909. Married Ethel G.G. Dunning, daughter of Charles W. Dunning. Toronto, June, 1912. Clubs: Royal Canadian Yacht: Colonial (Cleveland). Societies: A.F. & A.M. (32nd degree). Liberal; Methodist. Address: 50 St. Andrew's Gardens. North Toronto, Ont."

Trent Valley Archives

Ontario Corporation number 855883



P.O. Box 786
Peterborough, Ontario
K9J 7A2
(705) 743-4404

President:	Andre Dorfman
Vice-President:	Arthur T. Dainton
Board Secretary:	Donald G. Willcock
Corporate Secretary:	Elwood H. Jones
Treasurer:	Eric J. Curtis
Archivist:	Marianne MacKenzie
Chair, Irish Heritage Centre:	Keith J. Dinsdale
Heritage Gazette Editor:	Stephen M. Gavard
Director:	Ronald F. Doughty
Director:	Martha A. Kidd
Director:	James L. Maloney
Director:	William D. Amell

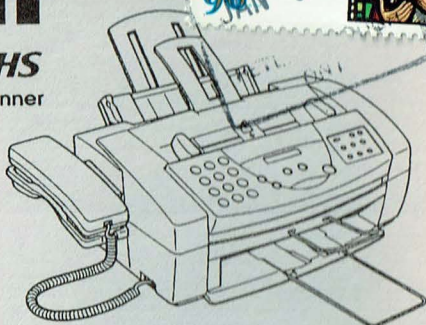
Trent Valley Archives would appreciate your financial support to carry on this noble mission to preserve our heritage.

All contributions over \$35 are tax deductible. The donor receives a membership for the current year and the quarterly issue of *The Heritage Gazette of the Trent Valley*.

Canon

MultiPASS C3000HS

Color Printer • Fax • Copier • Scanner

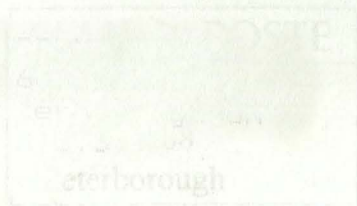


*Plain paper Bubble Jet facsimile.
Photo-realistic colour printing.
Up to 400 dpi scanning with full grayscale.
Includes Canon Creative 3.0, WebRecord
Internet printing and TextBridge Classic
OCR software.*

OFFICE CONNECTION

**918 High Street, Peterborough, Ontario
Tel: (705) 742-0711 Fax: (705) 742-2911**

**Copiers - Fax Machines - Printers - Computers
Sales - Service - Supplies - Rentals**



Suggested Retail Price: \$5.95